



# SCHMITT HORAN & CO.

PO Box 31 Candia, NH 03034  
sales@schmitt-horan.com  
603.432.2237

Online Bidding

[bids.schmitt-horan.com](https://bids.schmitt-horan.com)  
[www.liveauctioneers.com](https://www.liveauctioneers.com)  
[www.invaluable.com](https://www.invaluable.com)  
[www.bidsquare.com](https://www.bidsquare.com)

*Presenting a singular opportunity for the discerning collector  
of Precision Regulators and Complicated Watches,  
the carefully curated, lifelong collection of a New Hampshire horologist*

## Saturday, November 2nd 2024

### November 2 at 11:30am

**Lots 1 - 405 Discovery Sale**

*Live Bidding Only*

### November 2 at 3:30pm

**Lots 406 - 619 Live Auction**

*Absentee, Phone, Online, Live Bidding*

### Public Preview

Saturday, November 2 at 8am to 11:15am

Preview Also By Appointment  
October 21 to November 1  
Candia, New Hampshire

Welcome to Schmitt Horan & Co.'s Fall 2024 live auction event. Lots 1 - 405 are an in-person bidding event only. Lots 406 - 619 will offer all bidding methods including in-person, online, phone and absentee. Lots 406 - 488 are included in this catalog, all other lots can be found online.

Auction Location  
**80 Raymond Rd  
Candia, NH 03034**

Follow us on social media on **Facebook, Instagram, Twitter** and **Youtube**. Please visit [schmitt-horan.com](https://schmitt-horan.com) to view lots not listed in this catalog and / or additional detail images and condition reports not shown in this catalog.

Additional information on food, parking and accommodations can be found on [schmitt-horan.com](https://schmitt-horan.com). For more detailed instructions on bidding, please see terms and conditions at the rear of catalog.

We are always seeking fine consignments. Please contact us for a confidential consultation and appraisal. See invitation at rear of the catalog for more information.

Daniel Horan  
NH Auctioneer License No. 5060

## SUMMARY OF TERMS OF SALE

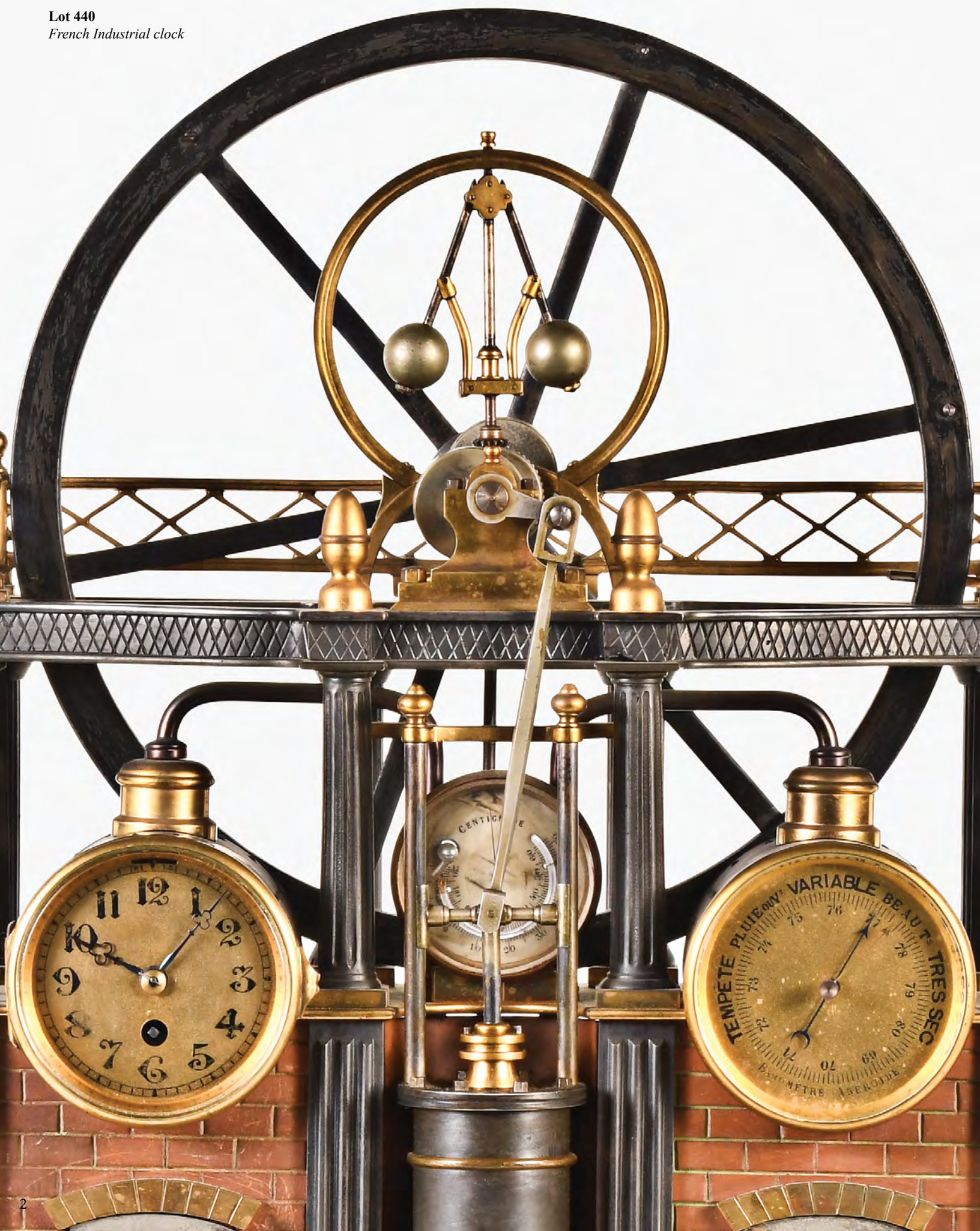
**REGISTRATION** Is required prior to the sale for all bidders, including online, internet, phone and absentee.

**CONDITION OF LOTS** We describe and evaluate each lot to the best of our ability. The condition and authenticity should be confirmed by personal examination. The final decision to bid, and the amount to bid is at the bidder's discretion and liability.

**ITEMS PURCHASED** Successful bidders must remit payment within 15 days of close of the auction. It is the buyer's responsibility to verify that he / she has received accessories that may be separate when taking possession of their merchandise.

**BUYER'S PREMIUM** Buyers pay 20% premium on the hammer price. Invaluable, Live Auctioneers and Bid-square bidders pay an additional fee of 8%, as well as the 20% buyer's premium.

**PAYMENT** Acceptable forms of payment include pre-approved personal checks, cash, Paypal, and all major credit cards: VISA, Mastercard, American Express & Discover. There is an additional 3% processing fee for all credit card and Paypal purchases.



# CONTENTS

- 1 EVENT ANNOUNCEMENTS
- 4 NAWCC WARD FRANCILLON SYMPOSIUM
- 5 ANTIQUARIAN HOROLOGICAL BOOKS
- 6 WRIST WATCHES
- 8 EUROPEAN POCKET WATCHES
- 20 AMERICAN POCKET WATCHES
- 21 MARINE CHRONOMETER
- 22 CARRIAGE CLOCKS
- 26 FRENCH & MYSTERY CLOCKS
- 31 BRACKET & BLACK FOREST CLOCKS
- 34 IMPORTANT PRECISION REGULATORS
- 51 TALL CLOCKS
- 52 AMERICAN CLOCKS
- 69 INVITATION TO CONSIGN
- 70 INDEX
- 71 TERMS AND CONDITIONS
- 72 VENDOR INFORMATION
- 73 BID FORM
- 74 FRISHMAN BOOK ON E. DUFFIELD

## BIDDING INCREMENTS

We will make every effort  
to use the following increments:

\$0 - \$500: \$25 increments  
\$501 - \$1000: \$50 increments  
\$1000 and up: Auctioneer's Discretion

Typically...  
\$1001 - \$2000: \$100 increments  
\$2001 - \$4000: \$200 increments  
\$4001 - \$10,000: \$500 increments  
\$10,001 and up: \$1000

*Lots 406 - 488 are included in this catalog.  
Photos and descriptions for lots 1- 405 and  
489-619 are available online.  
Please see [www.schmitt-horan.com](http://www.schmitt-horan.com).*



Lot 559  
"Clock Peddler" whistler  
(listed in online catalog)

2024 NAWCC

# Ward Francillon Time Symposium



October 21-24 • Sturbridge, MA

## A Horological Tour of New England

Experience New England horology with lectures and exclusive museum tours at the Willard House & Clock Museum, the American Clock & Watch Museum, and Old Sturbridge Village, including the J. Cheney Wells collection of clocks.

**Speakers:** Mary Jane Dapkus, Andrew Dervan, Damon Di Mauro, Greg Gorton, Rich Newman, Sara Schechner, Aaron Stark

**James Arthur Lecturer:** Dava Sobel will provide the backstory of her acclaimed book *Longitude* and its impact on the public's understanding of horology, specifically marine timekeeping.



Register at  
[education.nawcc.org/  
symposium](http://education.nawcc.org/symposium)

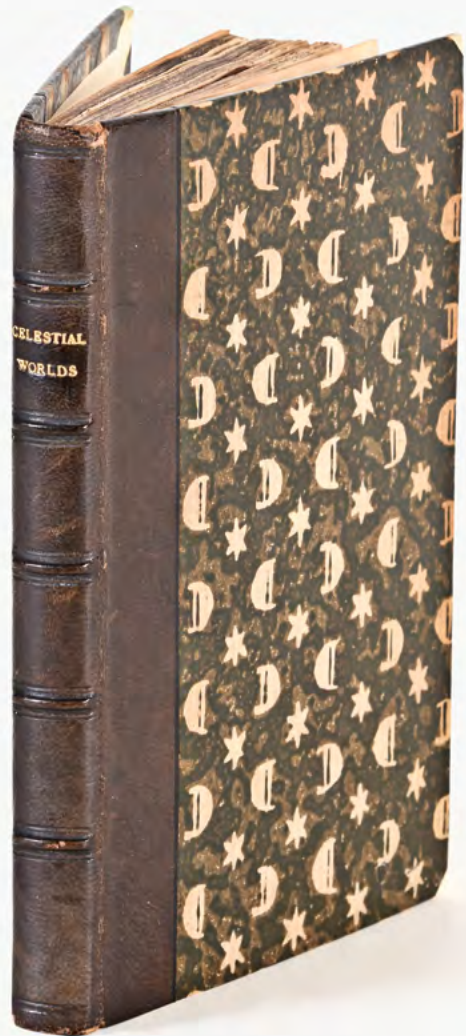




**406**

A fine and rare quarter leather bound copy of Breguet 1747 - 1823 by Sir David Salomons, first edition, gilt stamped quarter leather with marbled boards and gilt edge text block, including both volumes, and with the label of Malcolm Gardner

**\$800-\$1200** Circa 1920



**407**

Christian Huygens, "The Celestial Worlds Discover'd or Conjectures Concerning the Inhabitants, Plants and Productions of the Worlds in the Planets", enlarged and corrected second edition, 8vo, 5 folding plates, James Knapton, London, 1722

**\$400-\$600** Circa 1722



#### 408

Rolex Watch Co., Switzerland, a ref. 16610 "Submariner" wrist watch, 31 jewels, cal. 3135, automatic winding, adjusted to 5 positions and temperature rhodium plated movement with lever escapement and free sprung Micro Stella balance in a stainless steel case with Triplock crown, omnidirectional rotating bezel and ref. 93150 I10 Oyster bracelet with 593 ends, black dial with luminous dot, baton, and triangle markers, date aperture at 3:00 and luminous silver Mercedes hands, serial #T600213 (case), 7471912 (movement), 39mm

**Condition:** CASE: Case refinished; Case and bracelet polished. DIAL: Very good. HANDS: Very good. MOVEMENT PLATES: Very fine scratches; One case screw head broken; Plates with abrasion from contact with rotor; Specks of dust. MOVEMENT FUNCTION: Running order (winds, sets and ticks); Date advance and quick set functional.

**\$5500-\$6500** Circa 1996



**409**

Patek, Philippe & Co., Geneva, a gold ref. 2588 "Calatrava" wrist watch, 18 jewels, caliber 23-300, manual winding, adjusted to 5 positions, temperature and isochronism, rhodium plated movement with lever escapement, mono-metallic balance and freesprung Gyromax balance in an 18 karat yellow gold case with engraved presentation on back, and black lizard grain strap, baton marker silvered dial, gold baton hands, serial #1141536, 33mm, 37g TW

**\$2500-\$3500** Circa 1965



**410**

Omega, Switzerland, a mid 1970's ref. 378.0801 "Speedmaster" automatic wrist chronograph, 22 jewel, automatic winding, adjusted to 5 positions and temperature cal. 1041 gilt plate movement with lever escapement in a heavy stainless steel case with ref. 1162 stainless bracelet, black dial with date aperture at 3:00, 12 hour register at 6:00, constant seconds with concentric 24 hour indication at 9:00, tachymeter scale and white painted hands, serial #36252939, 42mm x 52mm

**\$1200-\$1600** Circa 1977



**411**

E. Huguenin Co., Locle, a fine and rare late 19th century minute repeating enamel pocket watch with portrait of Qajar Prince Tahmasp Mirza, 30 jewel, stem wind and lever set, cotes de Geneve decorated nickel bar movement with lever escapement, cut bimetallic balance and gold jewel settings in an 18 karat, guilloche enamel hunting case, the front with lion and sun emblem, the back with portrait of Prince Tahmasp Mirza, each image within a quatrefoil with floral ornament on a red ground, and with blue border, roman numeral double sunk white enamel dial with plum colored steel spade and whip hands, with decorative textile pouch, 56.5mm, 139.9g TW

**Condition:** CASE: Dent, band, beneath front cover, left of the pendant; Enamel with restoration; Scratches on outer surface of case; Front cover needs a bit of assistance when opening; Lacking observation cuvette; Bow with repair at top; Crown just beginning to wear through; Precious metal content marked. DIAL: Tiny flake at center of seconds bit, otherwise very good. HANDS: Good. MOVEMENT PLATES: Very dirty; Minor spotting; Very fine scratches on plate; Short scratch on barrel bridge at bridge screw; Some bright work with minor oxide. MOVEMENT FUNCTION: Running order (winds, sets and ticks); Low amplitude, needs service. COMPLICATION: Functions properly; Slide must be returned to resting position or striking will not complete sequence. Pouch with wear and losses.



*(Back of case featured on catalog rear cover)*

\$35000-\$45000 Circa 1875



**412**

Patek Philippe, Geneva, for Tiffany & Co., New York, a good late 19th century minute repeating split seconds chronograph owned by August Belmont, 30 - 32 jewel, stem wind and set, cotes de Geneve decorated nickel plate movement with counterpoised lever escapement and cut bimetallic balance with gold screws in an 18 karat, hinged back and bezel open face case with Jurgensen lips, the back with engraved coat of arms, cuvette with commemorative engraving celebrating Henry of Navarre's victory at the Suburban Handicap of June 23, 1896, and the inside of the cuvette with presentation from August Belmont III to Gardner Lewis III, roman numeral, outer black 5-minute markers white enamel dial with blued steel spade and whip hands, serial #97010, 46.5mm, 92.3g TW, case, dial and movement signed Tiffany & Co.

**Condition:** CASE: A few small, shallow dents; A few dings; Very fine scratches and minor scuffing on outer surface of case; Very fine scratches on cuvette; Engraving with moderate wear; Rear cover snap worn; Bow replaced; Crown shell starting to wear through; Precious metal content marked. DIAL: Faint hairlines from center to 1 - 2:00 and 7 - 8:00. HANDS: Minute with minor oxide. MOVEMENT PLATES: Haze; Very fine scratches on plate; Some steel components with fine scratches; Column wheel cap and screw with localized, minor oxide; Chronograph lever with spots of oxide; Speck of oxide on balance endstone setting; A few specks of oxide on chronograph wheel cock. MOVEMENT FUNCTION: Running order (winds, sets, and ticks). COMPLICATIONS: Functioning properly, would benefit from service.

*August Belmont was an American financier, builder of Belmont Park horse race track, and an owner and breeder of thoroughbreds. Belmont owned Henry of Navarre, and the watch was purchased with part of the proceeds from his first place finish at the 1896 Suburban Handicap, held at Belmont Park.*

\$15000-\$20000 Circa 1895

**413**

Vacheron & Constantin, Geneva, an early 20th century gold minute repeating pocket chronograph, approximately 30 jewels, stem wind and pin set gilt plate movement with lever escapement, cut bimetallic balance with gold screws, and whiplash micrometric regulator in an 18 karat, yellow gold, hinged back and bezel open face case with Jurgensen lips, engraved cipher on rear cover, and cuvette engraved "Vacheron & Constantin Geneve Chronometre B.M. Hawks 1905", arabic numeral, outer red 5-minute markers, single sunk white enamel dial, the periphery divided into fifth seconds, plum colored steel whip and spade hands, serial #320617, 52mm, 122.5g TW, case, dial and movement signed

**Condition:** CASE: Dent, back, to right of pendant; Cuvette with shallow dent at the same location; Band with small dent; Minor dings and pin pricks; Very fine scratches on outer surface of case; Case knife marks; Cuvette with case knife marks and a few fine scratches; Crystal with scratches; Bow and crown with minor wear; Precious metal content marked. DIAL: Very good. HANDS: Tip of hour with minor loss to color; Minute with soft solder repair and oxide. MOVEMENT PLATES: Very dirty; Haze; Very minor spotting; Bright work with scattered very fine scratches; Minor loss to gilding at end of click spring. MOVEMENT FUNCTION: Running order (winds, sets and ticks); Dirty, needs service. COMPLICATIONS: Functioning properly.

**\$9000-\$13000** Circa 1905

**414**

Patek, Philippe & Co., Geneva, a late 19th century minute repeating pocket watch for Silas Sadler Packard, 31 jewel, stem wind and lever set, cotes de Geneve decorated nickel bar movement with counterpoised lever escapement and cut bimetallic balance with gold screws in an 18 karat, yellow gold hunting case with engraved ciphers on front and back, the cuvette with serial number and engraved "Made For S.S. Packard by Patek, Philippe & Co. Geneva July 1884", the interior of the front cover engraved with names and dates of three members of the S.C.T. Dodd family, with roman numeral, single sunk, signed white enamel dial with plum colored steel spade and poker hands, serial #65628, 54mm, 119.1g TW, with later box and an extract from the Patek Philippe archives

**Condition:** CASE: Shallow dents; Small dent, band, between hinges; Minor dents on one side of repeat slide; Very fine scratches on outer surface of case; Scratch on repeat train bridge; Front cover with small gap at band when closed, adjacent to hinge; Front cover with slight misalignment with pendant when closed; Cover hinges a bit loose; Gold cap on pusher worn through; Bow with minor wear; Crown beginning to wear through; Precious metal content marked. DIAL: Very good. HANDS: Oxide, tip of minute; MOVEMENT PLATES: Very fine scratches on plate; Pin pricks; Ratchet wheel with spot of oxide; Crown wheel core with minor oxide; Specks of dirt. MOVEMENT FUNCTION: Running order (winds, sets and ticks). COMPLICATION: Functioning properly, would benefit from service.

*Silas Sadler Packard (1826 - 1898) established the "Bryant, Stratton & Packard's Mercantile College" in New York City in 1858. In 1867 he bought out Bryant & Stratton, and changed the name of the school to "Packard's Business College". He was the author of the "Bryant and Stratton Book-keeping Series", "Packard's Complete Course of Business Training", "The New Packard Commercial Arithmetic" and "Packard's New Manual of Book-keeping and Correspondence", and other business related titles. Samuel Calvin Tate Dodd was a lawyer, a friend of S.S. Packard, and well known through his work for John D. Rockefeller. He devised trusts that enabled Rockefeller to own multiple oil companies, and defended him against accusations that the conglomerate was a monopoly.*

**\$7000-\$10000** Circa 1884





**415**  
 Jean Louis More, Geneva, an early 19th century quarter repeating sur plateau musical pocket watch, key wind and set gilt movement with virgule escapement, the repeating work mounted to the top plate, and music components under the dial, repeating activated by a plunger in the pendant, and the music playing automatically at the hour, or on demand through a slide in the case band, in an 18 karat, yellow gold, hinged back and bezel, reeded edge open face case, the gilt cuvette engraved with the makers name and location, and with arrows indicating the direction of winding for the time and music trains, arabic numeral white enamel dial with blued steel Breguet style hands, 59.5mm, 141.6g TW

**Condition:** CASE: Small, shallow dents; Very fine scratches on outer surface of case; Fine scratches on inner surface of case; Cuvette with localized specks of verdigris; Cover extends beyond 90 degrees when opened, back, 110 deg.; Crystal with glue residue; Precious metal content tested. DIAL: A few minor scratches and a small chip at edge, 2:00, concealed by bezel. HANDS: Replaced. MOVEMENT FUNCTION: Running order (winds, sets and ticks); balance spring needs truing. COMPLICATIONS: Functioning properly; Music and repeating sound 2 minutes later than the hour/ quarters due to the improperly fitted minute hand.

\$4000-\$6000 Circa 1810



**416**  
 Switzerland, an early 20th century musical pocket watch, 6 - 8 jewel, stem wind and pin set nickel plate movement with cylinder escapement and 25 note cylinder music box attached to the top plate, playing a short tune when activated by the slide at the left of the pendant, in a large, hinged back and snap bezel gunmetal open face case, arabic numeral, outer black 5-minute markers white enamel dial with polychrome garland and bird at the center, and aperture at 6:00 for viewing the balance, fancy gilt hands, serial #1062, 65mm

**Condition:** CASE: Very fine scratches on outer surface of case; Some wear to the gunmetal finish, worn through at center of back; Minor oxide; Cuvette and case back with localized case knife scratches; Crystal with edge chip. DIAL: Very good, with a few short hairlines at 9:00 mounting screw, concealed by bezel. HANDS: Losses to gilding and tarnish. MOVEMENT PLATES: Fine scratches on plate; Some screw heads with minor marring; Dirty, oily. MOVEMENT FUNCTION: Running order (winds, sets and ticks). COMPLICATION: Functions properly.

\$2000-\$3000 Circa 1900





**417**

Patek, Philippe & Cie., Geneva, an early 20th century "Chronometro Gondolo" for Gondolo & Labouriau, Rio De Janeiro, 20 jewel, stem wind and set gilt bar movement with counterpoised lever escapement, cut bimetallic balance with gold screws, gold train, wolf tooth winding, and snail cam micrometric regulator in an 18 karat, yellow gold, hinged back and bezel, engine turned open face case with manufacturer and retailer details engraved on gold cuvette, roman numeral, single sunk white enamel dial with gold spade and poker hands, serial #146398, 55mm, 134g TW, together with an extract from the Patek Philippe archives

**\$3000-\$4000** Circa 1907



**418**

Switzerland, for Bowler & Burdick Co., Cleveland, an early 20th century gold minute repeating pocket watch, 28 jewel, stem wind and set cotes de Geneve decorated nickel bar movement with cut bimetallic balance and whiplash micrometric regulator in a 14 karat, rose gold, hinged back and bezel open face case with engraved cipher on back, arabic numeral, outer red 5-minute markers, double sunk white enamel dial with plum colored spade and whip hands, 47mm, 78.2g TW

**\$3000-\$4000** Circa 1900



**419**

H. Sandoz, Switzerland, a late 19th century gold minute repeating pocket chronograph, 31 jewel, stem wind and lever set, damascened nickel plate movement with lever escapement, cut bimetallic balance and applied gilt crest of the Sandoz family and motto in Latin "SINE DOLO" in an 18 karat, rose gold engine turned hunting case with Jurgensen lips, engraved monogram on front cover, and cuvette with movement details described in French, roman numeral, single sunk white enamel dial with fifth seconds chapter at the periphery, plum colored steel Breguet style hands, 55mm, 130g TW

**\$3000-\$4000** Circa 1885



**420**

Vacheron & Constantin, Geneva, a large, early 20th century "Chronometre Royal" pocket watch, 18 jewel, stem wind and set gilt bar movement with lever escapement, cut bimetallic balance with gold screws, whiplash micrometric regulator and wolf tooth winding in an 18 karat, yellow gold, hinged back and bezel, engine turned open face case, arabic numeral, single sunk white enamel dial with gold whip and spade hands, serial #345044, 57mm, 127.7g TW, dial, case and movement signed

**\$3000-\$4000** Circa 1915



**421**

Patek Philippe, Geneva, for Shreve, Crump & Low Co., Boston, a late 19th century gold pocket watch, 20 jewel, stem wind and set, adjusted, cotes de Geneve decorated nickel bar movement with counterpoised lever escapement, cut bimetallic balance with gold screws, wolf tooth winding, and snail cam micrometric regulator in a Jeannot & Shiebler 18 karat, yellow gold, hinged back and bezel open face case with engraved monogram on rear cover and engraved presentation on gold cuvette, arabic numeral single sunk white enamel dial with blued steel Breguet style hands, serial #86860, 51mm, 107.1g TW

**\$2800-\$3500** Circa 1890

**422**

Josh. Johnson, Liverpool, a large gold lever fusee pocket watch, 14 - 15 jewel, key wind and set gilt full plate movement with lever escapement, bimetallic compensation curb, thirty tooth escape wheel, and Massey III roller in a 16 and 18 karat yellow gold pair case, the outer with engine turning and high relief floral and foliate ornament, the inner with Chester hallmark and date letter for the year 1824, roman numeral engine turned gold dial with central basket, flowers and foliage, the border also with flowers and foliage, the ornament rendered in four color gold, and gold hands, serial #7719, 55mm, 149.2g TW

**\$2500-\$3000** Circa 1824

**423**

Switzerland, an early 20th century gold Swiss quarter repeating pocket chronograph with calendar, 14 - 15 jewel, stem wind and lever set gilt plate movement with lever escapement in an 18 karat yellow gold hunting case with engraved ciphers on both covers, the quarter repeating and chronograph functions activated through pushers in the band, arabic numeral, double sunk white enamel dial with subsidiary date and seconds chapters at 12 and 6:00 respectively, day and month apertures at 3 and 9:00 respectively, moon phase aperture at 6:00, fifth seconds divisions at the periphery and gilt Louis XIV hands, 56mm, 122.3g TW

**\$2000-\$3000** Circa 1900

**424**

Attributed to C.H. Meylan, Brassus & Geneva, a good early 20th century split seconds pocket chronograph, 22 - 24 jewel, stem wind and set, adjusted, damascened nickel plate movement with lever escapement, cut bimetallic balance with gold screws and whiplash micrometric regulator in a 14 karat, yellow gold, hinged back and snap bezel open face case with invisible hinge, arabic numeral, outer red 5-minute markers, double sunk white enamel dial with 30 minute register at 12:00, constant seconds at 6:00, and plum colored steel spade and whip hands, serial #7568, 47mm, 69.5g TW

**\$1800-\$2200** Circa 1910



**425**

P.H. Doret, Switzerland, an attractive 19th century gold pocket watch, 16 jewel, stem wind and lever set, damascened nickel plate movement with lever escapement and cut bimetallic balance with gold screws in an 18 karat, yellow gold, intricately engraved hunting case with observation cuvette, signed, roman numeral single sunk white enamel dial with blued steel spade and whip hands, serial #15365, 51mm, 106.4g TW

**\$1800-\$2500** Circa 1875



**426**

S.I. Tobias, Liverpool, a gold lever fusee pocket watch for the American market, 17 jewel, key wind and set gilt plate movement with lever escapement and Massey III roller in an American, 18 karat yellow gold engine turned case with high relief floral and foliate ornament to the bezel, edge of back, pendant and bow, engine turned dome, and with makers mark "A.C. Benedict 28 Bowery N.Y.", roman numeral, engine turned and engraved gold dial with rendering of a building with three domes and four color gold floral and foliate border, gold spade and poker hands, serial #10199, 51mm, 113.5g TW

**\$1600-\$1900** Circa 1835



**427**

John Harrison, Liverpool, a gold lever fusee pocket watch for the American market, 7 jewel, key wind and set gilt plate movement with lever escapement and Massey III roller in an American, 18 karat yellow gold engine turned case with high relief foliate ornament to the bezel, edge of back, pendant and bow, and with makers mark "H.T.&J N.Y.", roman numeral, engine turned and engraved gold dial with four color gold floral and foliate border, gold hands, serial #5703, 45mm, 89.9g TW

**\$1500-\$1800** Circa 1830



**428**

J. Verhagen & Co., Germany, a double dial, triple calendar pocket watch with phases of the moon, 15 jewels, stem wind and lever set gilt bar movement with lever escapement and cut bimetallic balance in a 14 karat, rose gold, hinged back and snap bezel open face case, signed roman numeral, double sunk white enamel dial with moon phase aperture below 12:00, the reverse with gilt, arabic numeral date dial within a rotating silvered chapter for the day of the week, and aperture showing the manually operated month display, the dials with blued steel hands, 50mm, 101.9g TW

**\$1000-\$1500** Circa 1900



**429**

American Waltham Watch Co., Waltham, Mass., a late 19th century model 1877 pocket watch, 18 size, 15 jewel, stem wind and lever set, adjusted gilt plate movement with lever escapement, cut bimetallic balance, and Woerd micrometric regulator in an 18 karat, yellow gold, engraved box hinge hunting case with monogrammed rose gold shield surrounded by four color gold foliage and flowers, the back with 8 point star surrounded by three color gold foliage, and engraved presentation on gold cuvette, roman numeral, outer black 5-minute markers, double sunk white enamel dial with blued steel open morning glory hands, serial #2239111, 163.4g TW

**\$3000-\$4000** Circa 1885



**430**

Elgin National Watch Co., Elgin, Illinois, a good early 20th century "Father Time" pocket watch, 18 size, 21 jewel, stem wind and lever set, adjusted to positions, temperature and isochronism, damascened nickel plate movement with lever escapement, cut bimetallic balance with gold screws, gold jewel settings, and micrometric regulator in a 14 karat, yellow gold, hinged back and bezel open face case with foliate engraving, roman numeral, single sunk O'Hara style multicolor enamel dial with blued steel spade hands, serial #9787670, 131.9g TW

**\$1600-\$2200** Circa 1905



*Detail of movement*

**431**

Charles Frodsham, London, a mid 19th century two day marine chronometer, 11 jewel, free sprung fusee movement with Earnshaw's escapement, cut bimetallic chronometer balance with helical balance spring and diamond endstone, signed roman numeral silvered dial with wind indicator and blued steel hands, in a gimballed brass bowl with shuttered winding aperture, serial #2596, housed in a three tier mahogany box with brass furniture and with larger protective oak box

**Condition:** outer box with minor dings and scratches, bottom with splits, rear left corner joint with minor separation, strap replaced, mahogany box refinished, hardware with minor discoloration and tarnish, dial with minor marks, hands good, movement a bit dirty and with a few faint fingerprint stains, running.

**\$2000-\$3000** Circa 1860 8.25in x 10.25in x 8.5in



**432**

Ellis, Paris, a fine and rare large carriage clock with perpetual calendar and hour repeating, the unusual gilt case on flattened ball feet and with four beveled glasses, diaper and foliate engraving, the corners with columns having octagonal bases and capitals, the design carried through to the projecting corners of the base, the top with ball finials and ornate handle, and case back with engraved door, signed, roman numeral white enamel dial with blued steel trefoil hands, gilt engraved mask, and subsidiary dials for alarm, day, date and month, eight day, three train movement with lever platform, striking the hour and half hour on a bell, and repeating the last hour on demand, and calendar work at the base of the back plate

**\$4000-\$6000** Circa 1880 8.25in x 4.75in x 4.25in



**433**

Drocourt, Paris, for Dent, London, a very good cannelee cased carriage clock, the gilt case with five beveled glasses and beautifully engraved with flowers and scrolling foliage on a matted ground, roman numeral white enamel dial with blued steel Breguet style hands, subsidiary arabic alarm chapter, and signed "Dent 33 Cockspur Street London", eight day, three train movement with lever platform, striking the hours and half hour in passing, and repeating the last hour on demand, the back plate with Drocourt's mark, and an owners name and address engraved on the case bottom behind the movement

**\$2000-\$2500** Circa 1880 7.25in x 3.75in x 3.375in



**434**

France, a very attractive 19th century hour repeating carriage clock with Limoges panels, polished gilt Anglais case with glazed front, the sides, back and top with decorative panels featuring ethereal winged female figures in landscapes and rendered en grisaille on a red ground, roman numeral dial with Louis XIV hands and arabic subsidiary alarm chapter flanked by two putti beneath trees, one with a sand glass, the other with a scythe, also rendered en grisaille and on a red ground, eight day, three train movement with lever platform, sounding ting tang hours and half hours, and repeating the last hour on demand

**\$2000-\$3000** Circa 1880 7.5in x 4in x 3.5in



**435**

France, an unusual fourth quarter 19th century hour repeating oval carriage clock, the gilt case with five beveled glasses and engraved with flowers and foliage on a matted ground, the base also adorned with four snakes, roman numeral white enamel dial with blued steel Breguet style hands, subsidiary arabic alarm chapter, and unusual, engraved, gilt convex mask conforming to the curve of the case front, eight day, three train movement with lever platform, counting the hours and half hour on a bell, and repeating the last hour on demand, the back plate marked "P.q.", and with the numbers 886 and 1126

**\$2000-\$3000** Circa 1875 6.75in x 4.375in x 3.5in



**436**  
France, for Jas. Foord, Hastings, a very decorative gorge cased hour repeating carriage clock with polychrome porcelain panels, the gilt case with beveled glasses to the front, top, and back, the sides with porcelain panels featuring children at play, the scenes with gilt borders decorated with white hemispheres and framed in cobalt blue, the roman numeral porcelain dial above a vignette with a child reclining in a boat, and another pulling it along, the dial and scene with gilt border on cobalt as on the sides, eight day, two train movement striking the hours and half hour in passing and repeating the last hour on demand

\$2000-\$3000 Circa 1880 6.5in x 3.5in x 3.25in



**437**  
Louis Achille Brocot, Paris, an hour repeating carriage clock with Japonisme influenced porcelain panels, gilt case with beveled glasses at front, top, and back, the sides with colorful painted porcelain panels with scenes featuring birds and butterflies surrounded by flowers and foliage on a dark brown background, roman numeral dial surrounded by ornament matching the sides, gilt, polished distaff hands, and eight day, two train movement with lever platform, striking the hour and half hour in passing, and repeating the last hour on demand

\$2000-\$2500 Circa 1880 7in x 3.75in x 3.25in



**438**  
Holingue Freres, St. Nicholas d' Aliermont, for J. Soldano, London, a good third quarter 19th century gorge cased hour repeating carriage clock, the gilt case with beveled glasses and engraved with foliage, baskets, egg and dart, paterae, and diapering, the top glass over an engine turned mask with oval aperture for viewing the escapement, roman numeral white enamel dial with blued steel Breguet hands, subsidiary arabic alarm chapter, and with engine turned mask, eight day three train movement with lever platform marked "JS" and "N. 759", striking the hour and half hour in passing and repeating the last hour on demand, the back plate also marked "759", the front plate with "HL" mark and Holingue serial number 4535

\$1800-\$2200 Circa 1870 6.5in x 3.625in x 3.25in



**439**  
France, a good 19th century grand sonnerie striking cannelée cased carriage clock with calendar, the gilt case with molded base and cornice, and with five beveled glasses, roman numeral white enamel dial with blued steel Breguet style hands and subsidiary dials for the day, alarm, and date, eight day, three train movement with gilt and silvered lever platform and cut bimetallic balance, striking grand or petit sonnerie quarters on a bell, and repeating the last hour and quarter on demand, with strike selection lever located under the base

\$1600-\$2200 Circa 1875 6.75in x 3.875in x 3.25in





**440**  
 France, a rare late 19th century French industrial steam engine and flywheel compendium, the griotte marble base on gilt feet and supporting two red patinated bronze furnaces with horizontal, patinated bronze boilers mounted with a clock and barometer, and flanking a central cylinder with piston and thermometer, all beneath a patinated frame resting on fluted columns and surmounted by gilt finials and balustrade, centrifugal governor, and large, vertical flywheel, the reciprocating piston connected to a crank and appearing to drive the governor and wheel, powered by a clockwork motor concealed in the base

**Condition:** case dirty, minor losses to gilding, marble base and patinated surfaces very good, steel components with minor oxide, clock dial with minor losses to numerals, clock movement running but very dirty, thermometer tube broken, flywheel rim needs truing in the flat, some flywheel rim screws replaced, the machinery working, the movement that drives the action is very dirty and oily, needs service

**\$16000-\$22000** Circa 1890 18.5in x 14in x 7.25in



**441**  
 A. Rousseau, Paris, a good late 19th century bras en l'air mantel clock, verde antico base with gadrooned brass feet, cast ornamental moldings and brass mount below a cast female figure within a niche composed of two slender columns supporting an arch with foliate ornament, the back with gilt ivy vine and bellflower ornament on a blue enamel ground, and surmounted by three finials, her hands pointing to the arabic numeral white enamel sectors flanking the case, the arms rising to indicate the time, and falling back when they reach the top, powered by an eight day brass movement with lever platform, the inside of the case stamped "A. Rousseau"

**Condition:** marble with a few very minor losses, brass components lacking the majority of the original gilding, polish residue and tarnish, figure with left arm repair above the wrist, left hand and wrist with verdigris, hour sector with cracks in enamel, movement running, steel components with minor rust, time display functional but adjustments will be needed, platform replaced.

**\$6000-\$9000**  
 Circa 1900 18in x 9.5in x 4.75in



**442**  
Andre Romain Guilmet, Paris, an industrial "Beam Engine" desk clock, on a black slate base with gilt feet supporting a cast, crosshatched floor, the engine cylinders and pistons flanking the beam pivot frame, the beam rocking as if powered by the pistons, surfaces finished with a combination of gilding, nickel plating, and green paint, with roman numeral white enamel dial, blued steel Breguet style hands, and eight day movement with Guilmet's modifications

**Condition:** base with edge chips, green painted fields originally in black, some surfaces with minor tarnish, bezel glass with edge chip on interior, dial good, signature illegible, hands good, running, escapement out of beat for a short portion of the escape wheel rotation.

**\$3000-\$5000** Circa 1890 7.25in x 8in x 3.75in



**443**

France, an industrial lighthouse compendium with rotating lantern room, the tapering, architectural case with gold plated, faux ashlar exterior, the base and column with simulated windows and door, a projecting gallery with balustrade surrounding the nickel plated, rotating, domed lantern room with finial and spire, and containing an eight day timepiece with roman numeral silvered dial with blued steel hands opposite an aneroid barometer with silvered dial and gilt center, and flanking, silvered Fahrenheit, Centigrade and Reamur thermometers, the rotation powered by a clockwork motor concealed in the base, all resting on a round, black slate base, with associated conforming wooden base and dome, dimensions of dome and base listed

**\$2500-\$3500** Circa 1890 21.5in x 10.25in



**444**

France, a large figural swinging mystery clock, on a stepped marble base supporting a conforming spelter plinth with plaque marked "La Mures Par Aug. Moreau", surmounted by a figure of a young woman in flowing dress with foliate and floral garlands, her right hand held aloft, and supporting the swinging compound pendulum, the eight day timepiece contained in the patinated, upper sphere with Gothic roman numerals and Louis XIV style hands, above the three rod, gridiron style pendulum with patinated bob

**\$2000-\$3000** Circa 1900 39.5in x 13in x 13in



**445**

France, a good gilt and patinated bronze figural clock representing the cardinal virtue Prudence, on rectangular feet with recesses containing symmetrical floral and foliate bas relief ornament and supporting the patinated base with gilt anthemion and floral ornamented molding below a rectangular plinth with gilt floral festoon emerging from a pair of cornucopias supported by rosettes and with palm leaf tails, the rectangular clock case surmounted by a gilt and patinated urn filled with fruit and flowers, the front with butterflies at the upper left and right of the roman numeral, engine turned silver dial with gilt bezel above a gilt lyre flanked by honeysuckle and laurel, and torches encompassed by snakes, the standing female figure at right in a Grecian dress and with serpent around her left wrist, drinking from a tazza held in her right hand, eight day, two train pendule de Paris movement with silk thread suspension and striking the hours and half hour on a bell

**\$1000-\$1500** Circa 1830 16.75in x 11.75in x 4.625in



**446**

France, an interesting second quarter 19th century lyre clock, the molded base on engine turned feet below a rectangular plinth with cornucopia, torch, and laurel wreath mounts supporting the lyre form case ornamented with cornucopias, flowers and foliage, the top with bearded male bust with laurel wreath and star, flanked by swan heads supporting a fruit and flower festoon, skeletonized dial with arabic numeral white enamel cartouches, a ring of laurel wreaths and cornucopias at the center, and eight day pendule de Paris movement with silk thread suspension, tin dust shield, and striking the hours and half hour on a bell

**\$1000-\$1500** Circa 1830 21.25in x 7.5in x 5in



**447**

Claudius DuChesne, London, a fine Queen Anne basket top table clock with pull quarter repeating on five bells, the ebony veneered oak case on short, round gilt feet and with molded base and cornice, glazed doors to the front and back, the sides with repousse strapwork frets with naturalistic ornament, and cast carrying handles, and surmounted by four urn and flame finials and a repousse basket top, the front and back with reserves featuring St. George and the dragon, the sides with images of Queen Anne, and seven smaller urn finials, nine inch square composite dial with wheatear border, matted center, gilt cherub spandrels, roman numeral silvered chapter ring, mock pendulum aperture below 12:00, date aperture above 6:00, and ringed winding apertures, eight day, three train movement with fusees for the time and strike trains, knife edge verge escapement with bob pendulum, five knopped pillars, pull quarter repeating on five bells, and engraved backplate with wheatear border, scrolling foliate ornament, a bird just below center, and above a grotesque mask

**Condition:** in good condition overall, case polished, minor losses to gilding, case top with minor deformation, a few splits, and small loss at rear left, door glasses replaced, dial good, minute hand replaced, movement running and striking, repeating functional, but quarters frequently strike incorrectly, back cock and guard replaced, pinned ends of pillars with filing, lacking one movement mounting screw.

**\$6000-\$9000** Circa 1700 21.5in x 12.25in x 6.5in



**448**

Johann Baptiste Beha, Eisenbach, Germany, a very rare eight day Gothic railway house hanging cuckoo clock, the oak veneered architectural case with ornate fretwork details surmounted by a fully exposed, hand carved and painted, oversized, articulated cuckoo bird with moving wings and beak on a cupola perch, wooden dial with applied carved roman numerals, brass trefoil hands, and eight day, two train fusee movement with wooden plates and heavy brass clad pendulum

**Condition:** this is a near mint example of a very rare Gothic cuckoo. The condition is remarkable considering the fragility of the design. An identical example of this model appears in "Rare and Unusual Black Forest Clocks" by Justin Miller, page 51 and is part of the collection at the Cuckooland Museum, UK. The case is all original and in very good condition overall, small slight crack in front center of the curved lower skirt on the lower bracket, minor veneer losses on the scalloped trim below the cove molded base, a separation repair to the left serpent figure on crest, some partial loss to a few of the applied wooden numerals, original hands, bird is original and in very good condition, with highly detailed carved feathers and retains its original paint, label of the original retailer "Ed Schirrmann" on backboard with some wear and loss, movement is complete with original pendulum, bellows have been re-leathered.

**\$5000-\$7000** Circa 1880 32in x 13in x 8.5in



**449**

Germany, a late 19th century Black Forest shelf cuckoo with matching bracket, the case of typical cuckoo form and adorned with carved vines and leaves, the top with carved bird, and resting on a molded base with carved fence, applied roman numeral dial with a very unusual hinged brass bezel on wooden mount and with carved bone hands, eight day, spring driven double fusee movement with heavy brass plates, striking on a gong, and painted wooden bird with articulated wings

**\$2000-\$2500** Circa 1890 23.5in x 14in x 8.5in



**450**

Black Forest, Germany, cuckoo and quail wall clock, hand carved "fox and grapes" motif adorned with lattice, grape leaves and vine work with mounted eagle, wooden dial with applied numerals, carved bone hands, cast brass time and quarter striking eight day spring driven movement, the striking trains with fusees, time train with going barrel

**\$1500-\$2000** Circa 1890 27.5in x 20.25in x 12in



**An important four pendulum standing Isochronal Clock by E. Howard & Co. for Hezekiah Conant**

**451**

E. Howard, Boston, for Hezekiah Conant, Pawtucket, RI., an important Conant four pendulum "Isochronal Clock", the architectural oak case with molded base below a shallow, reeded cavetto surbase with foliate carving and central reserve, the mid section with fluted and spiral carved columns with turned bases, stylized Composite order capitals, and flanking a glazed door with beveled glass, and the top with fluted columns also having turned bases, carved capitals and flanking a beveled glass door, supporting a molded cornice below an ogee molded pitched pediment, the case sides with glazed doors, and interior of the back marked "11 1888", roman numeral silvered dial signed "H. Conant Patented Aug. 23rd 1887", with six subsidiary dials below, four at the bottom indicating for each of the four escapements and engraved with the beats per minute for each, and two just above for the average of the two escapements combined, all mounted to a square, silvered brass plate signed "E. Howard & Co. Boston" below the main dial, gilt spandrels with scrolls and suggested leaf forms, and blued steel hands, large brass movement with damascened, three part front plate, four escapements driven by two trains, a pair of differentials to average the paired escapements, both geared to a central differential which averages the combined input, and driving the sweep seconds hand, resting on a heavy cast iron bracket mounted to the case back, the four nickel plated, mercury compensated pendulums of different lengths and each with four sealed steel jars, each with its own beat scale supported by tapering brass stands attached to the case bottom, the two trains driven by rectangular lead weights.

**Condition:** case appears to retain its original finish, in good condition overall with minor bumps and dings, minor loss at the peak of the pediment, and a small loss at the top of the upper left column capital, dial with localized tarnish and discoloration, hands good, movement with some tarnish and fingerprint staining, pendulums with areas of minor oxide and light rust, beat scales with minor tarnish, running. Repaired and serviced by a skilled restorer.

**\$300,000 - \$400,000** Circa 1888 96in x 34.25in x 22in

Discussions of timepieces with multiple oscillators naturally include the names of important figures such as Huygens, Janvier, and Breguet, as well as more recent innovators like David Walter and F.P. Journe. Notably absent from that list is Hezekiah Conant (1827 - 1902), the designer of this and other two and four oscillator timepieces. He began his life as mechanic and inventor as an employee at a machine shop when he was about 20 years old. During this time he also learned mechanical drawing and studied mechanical engineering, laying the groundwork for his life's path as an industrialist, mechanic, and inventor.

His idea for the use of multiple oscillators is thought to have come from observatory and navigational practice, whereby the average rate of multiple timekeepers was used in order to facilitate a more accurate result. His movements have separate escapements for each pendulum or balance, consolidating multiple timepieces into one machine, with differentials automatically averaging the rate. This design also incorporates the advantages of sympathetic resonance due to the proximity of the oscillators to each other. Conant believed incorrectly that the increase in accuracy was in proportion to one over the square of the number of oscillators, so that a two pendulum clock would reduce errors to 1/4 of that of a single pendulum, four would reduce it to 1/16, etc. That being said, there is no denying that the clock performed extraordinarily well. His first four pendulum clock was built by Tiffany & Co., and had oscillators of equal length. The timekeeper ordered from E. Howard had pendulums of different lengths, an experiment to verify that the increased accuracy was not exclusively due to the sympathetic resonance of the oscillators of equal length in the Tiffany example. The clocks were on exhibit at the Exposition Universelle of 1889 in Paris, and again at the Worlds Columbian Exposition, held in Chicago in 1893. An exhibition report stated that the Tiffany clock had varied by only 1.5 seconds in 10 months.

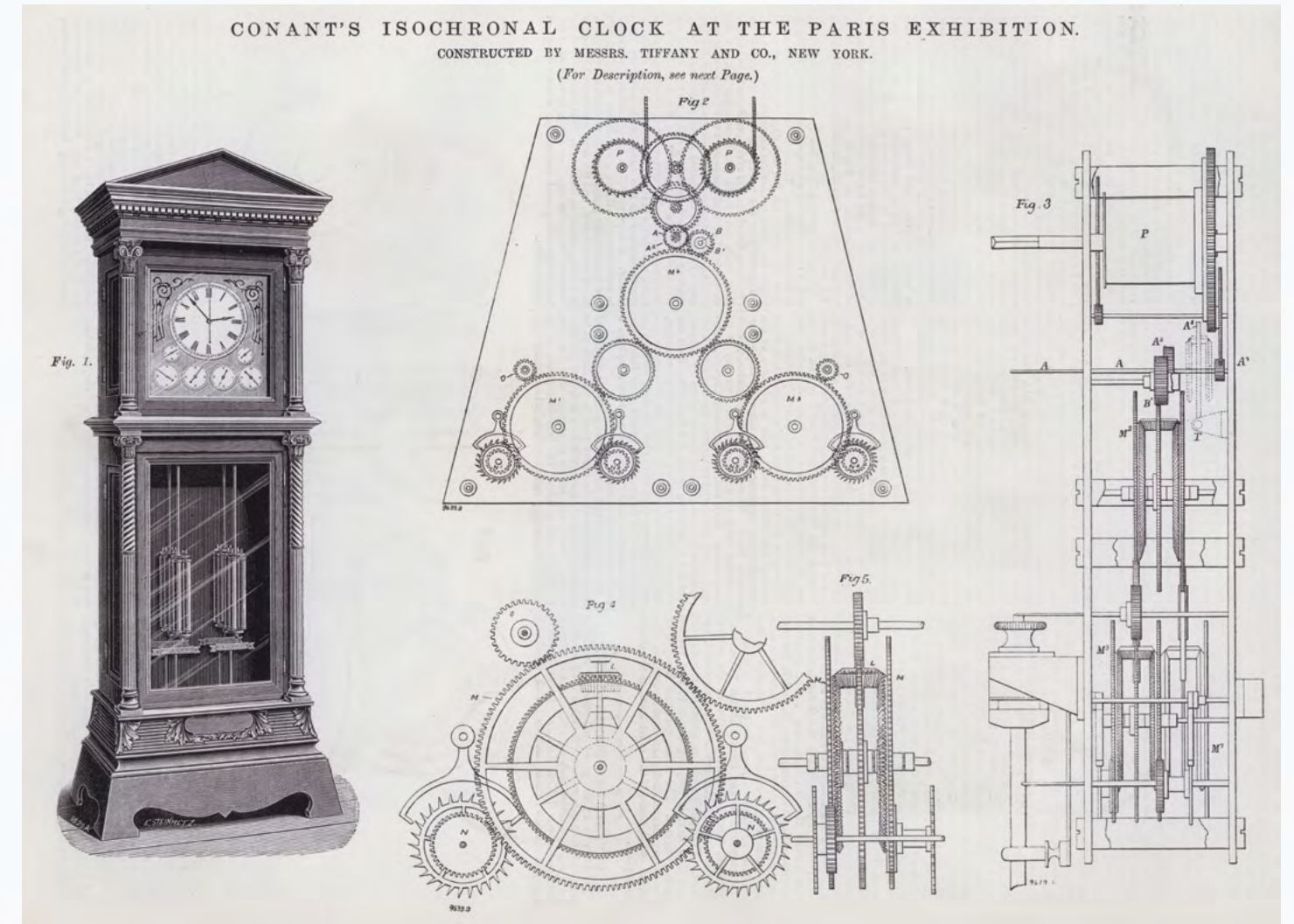
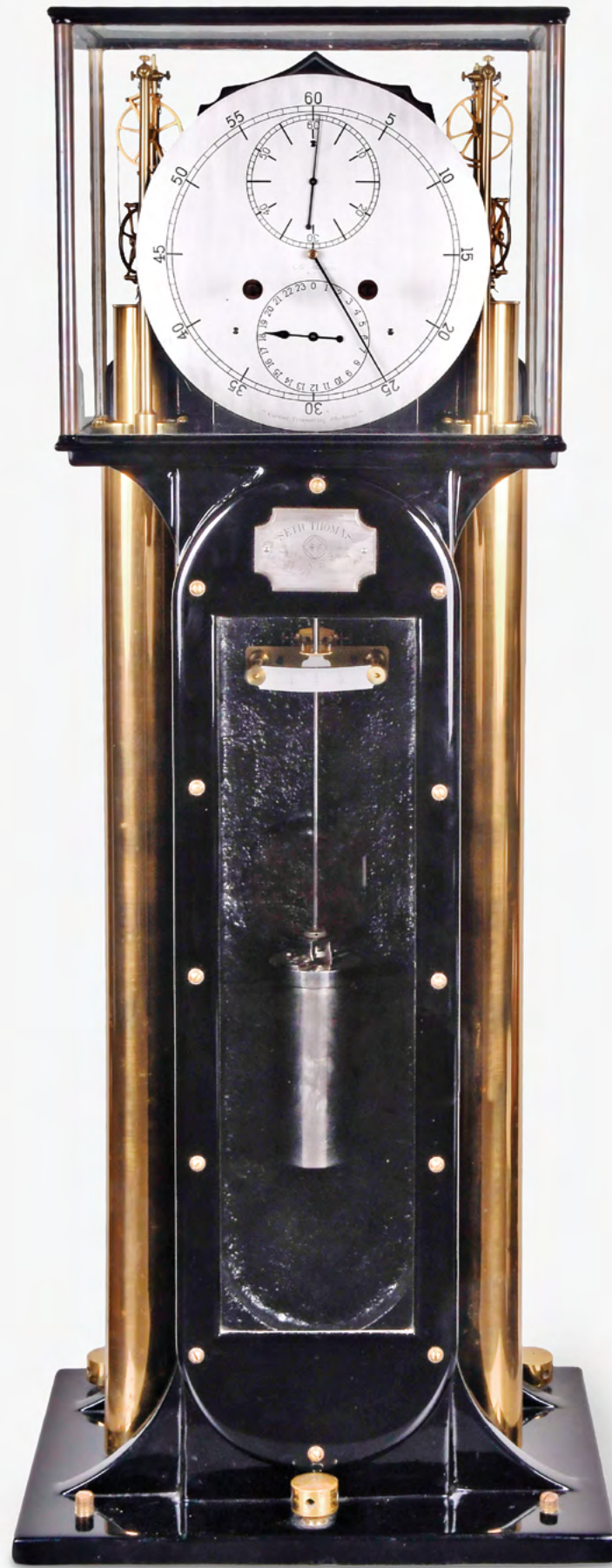


Illustration from Engineering, September 1889 incorrectly attributing the E. Howard & Co. case and movement to Tiffany & Co.





## A fine and rare late 19th century Seth Thomas month going standing Precision Clock

**452**

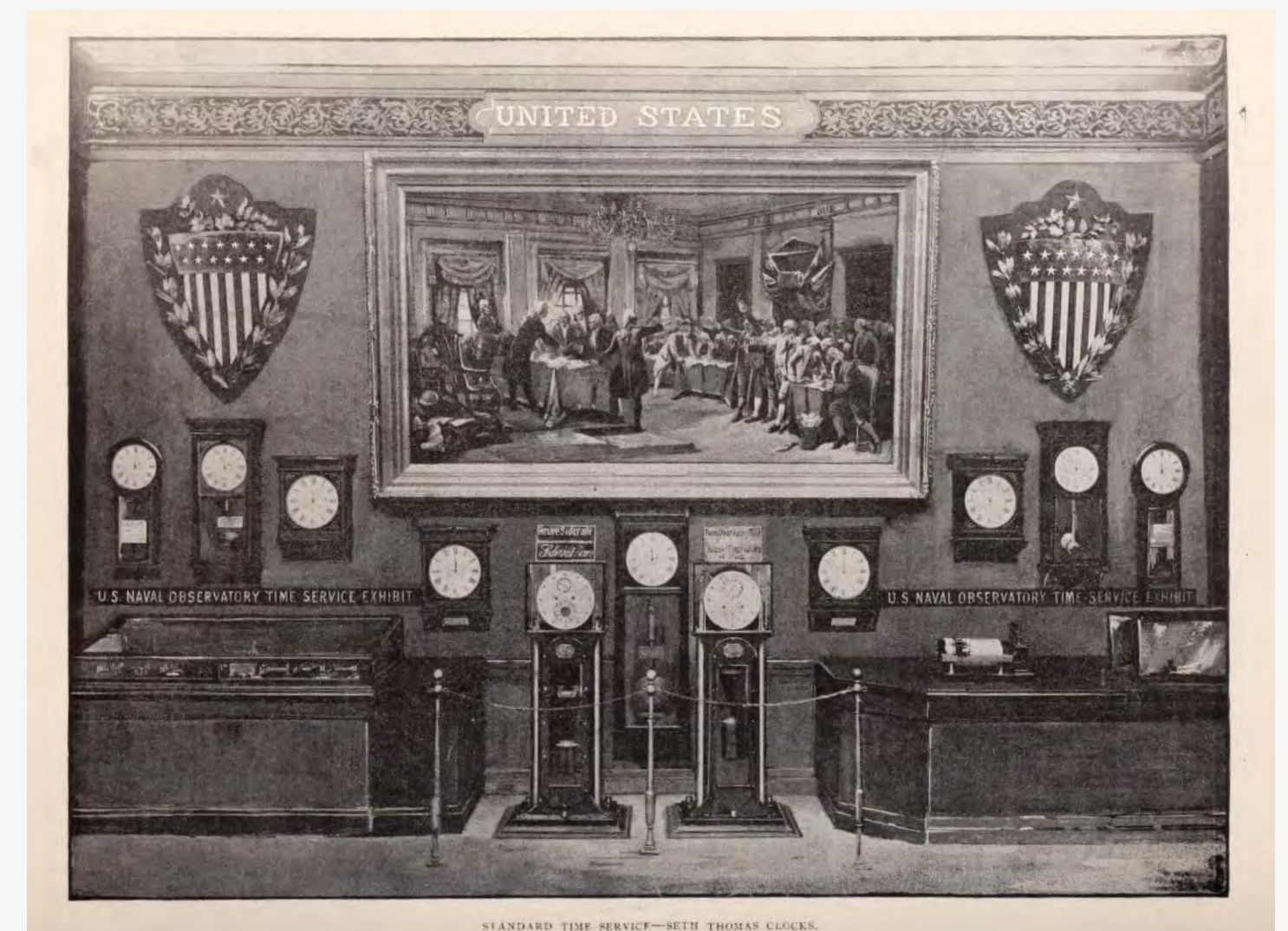
Seth Thomas Clock Co., Thomaston, Conn., a fine and rare late 19th century month going "Precision Clock", the japanned cast iron case with leveling and stabilization screws in the base, the front with glazed iron frame attached with 12 brass screws, and rectangular glazed top with sealed winding apertures, 14 inch arabic numeral silvered astronomical dial with blued steel hands, signed "Seth Thomas No. 7" and "Gardner Transmitting Attachment", the 32 day, eight jewel movement with damascened trapezoidal plates, Graham deadbeat escapement, pendulum crutch fork with ivory pins, and Harrisons maintaining power, driven by two brass weights with jeweled pulleys, descending in polished brass tubes at the case sides, mercury compensated pendulum with large nickel plated steel jar, capstan nut adjustment, brass weight tray for fine rating, silvered vernier beat scale, and locking lever for stabilization of the pendulum while regulating

**Condition:** case with a few minor chips to finish, dial and beat scale resilvered, dial with minor staining just above the 20 minute mark, movement very good, clean and running, pendulum with very minor localized oxide and losses to plating.

**\$200,000 - \$400,000** Circa 1890 62in x 24in x 16in

The second half of the 19th century was a period of intense horological experimentation in the pursuit of further refinement of the accuracy of pendulum controlled timekeepers. In the Seth Thomas pamphlet promoting the Precision Clock, it is stated that "...every feature of design and workmanship has been made subservient to the principal idea of obtaining as high an accuracy in their time measuring qualities as our present knowledge of physical science and of the horological art will allow.", and that their Precision Clock is designed to be "...a time measuring instrument entirely above the line of commercial accuracy and intended for those who desire for purposes of scientific work, or for watch and chronometer rating, or as a standard timepiece for local reference, to have a clock of extreme precision." By 1889, the company advertised that it had eight Precision Clocks in service, including two in Lancaster and Lewisburg, Pa., two at Grinnell, Ia., one in Melbourne, Australia, and three in Chile, with two more being exhibited at the 1889 International Exhibition in Paris, located at the center of the U.S. Naval Observatory Time Service display.

The clock was available in two configurations, one with a Graham deadbeat escapement and running for 32 days, priced at \$1080.00, and the other with 8 day duration and gravity escapement, costing \$1350.00. The design and construction of the clocks was supervised by electrical and metallurgical engineer Dr. Leonard Waldo, the astronomer in charge of the Horological Bureau at the Yale College Observatory. He also served as the assistant astronomer on the U.S. expedition to Tasmania for the observation of the 1874 Transit of Venus. The gravity escapement clocks incorporated the escapement modification of Professor C. S. Lyman, the gravity arms being lifted against large anti friction rollers. Lyman was professor of mechanics and physics at the Yale College Sheffield Scientific School, where he also taught theoretical and practical astronomy. Of the major American clock manufacturers, Seth Thomas, E. Howard & Co., and the Waltham Clock Co. were the only firms to offer timepieces capable of performance suitable for scientific purposes.



U.S. Naval Time Service Display at the Paris Exhibition of 1889 from the Jeweler's Circular and Horological Review, Vol. 20



*(Movement featured on inside of catalog rear cover)*

**An important E. Howard & Co. standing regulator with professor Charles A. Young's gravity escapement**

**453**

E. Howard & Co., Boston, for the Princeton University Observatory, an important standing precision regulator with Prof. Charles A. Young's gravity escapement, the clock mounted in a cast iron frame with glass panels, the signed movement with damascened plates, six jeweled pivots at the escapement, the rewinding arm, escape wheel locking, impulse lever contact on pendulum and impulse lever rest also jeweled, signed, silvered 24 hour astronomical dial with blued steel hands, six jar mercury compensated pendulum of Young's design, driven by two cast iron weights, serial #194, now in a custom made, architectural cherry case with beveled glasses

**Condition:** case very good, iron frame good, with minor losses to black paint, lacking the original X braces, now with horizontal bracing, strip of steel added to top of frame, dial with tarnish, hands good, movement good, some nickel plated components with losses to plating, nickel plating on pendulum with minor staining, otherwise very good, running. Repaired and serviced by a skilled restorer.

**\$100,000 - \$150,000** Circa 1877 79in x 35in x 23.5in

*Charles Augustus Young (1834 - 1908) was one of the leading solar astronomers of the second half of the 19th century. He studied astronomy and solar physics at Dartmouth, and graduated at the top of his class in 1853; at the time of his enrolment, he was 14 years old. He went on to hold teaching positions at a number of institutions, most notably at his alma mater, and then moved on to Princeton in 1877, retiring in 1905. He ordered two regulators from E. Howard & Co. in 1877 for use at the Princeton "Observatory of Instruction", and clocks 193 and 194 were delivered later that year.*

*The escapement used for the mean time clock was the Dennison 4 legged gravity type, and the sidereal clock was to be fitted with a gravity escapement to his own plan; Young had been experimenting with gravity escapements of his own design as early as 1859. The escapement impulses the pendulum thirty times per minute, or once every two seconds. The compensated pendulum is also of Young's design, employing a hollow, mercury filled rod connected to a horizontal tube below the bob, and also with the vertical tubes on either side of the pendulum. The two clocks that Young ordered for use at Princeton were included in Sotheby's "Masterpieces from the Time Museum", part four, volume III, lots #1139 and 1140, where the consignor purchased the present lot.*



Princeton University's Observatory of Instruction, Professor Young's Residence at right, Prospect St, Princeton, New Jersey



## A unique E. Howard & Co. year running hanging regulator

**454**

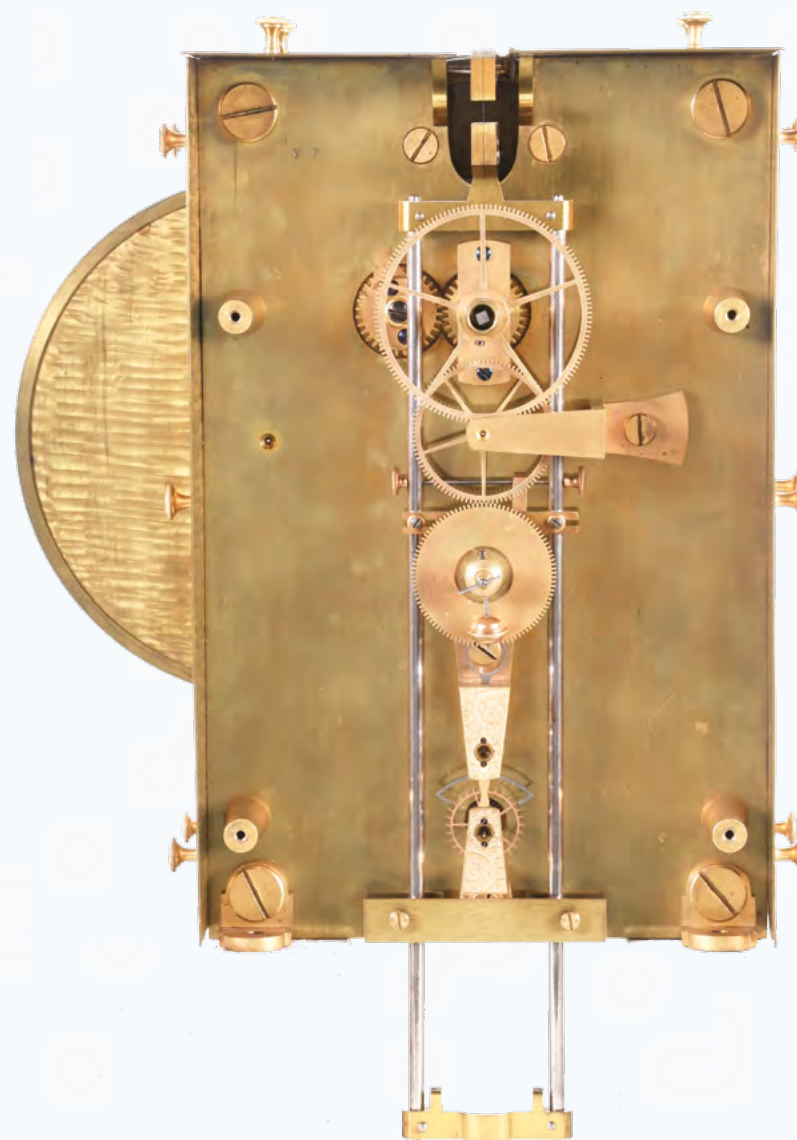
E. Howard & Co., Boston, Mass., a unique year running hanging regulator, the discorectangular walnut case with door having molded, glazed apertures for viewing the dial and pendulum, and glazed aperture at upper left for viewing the movement, signed roman and arabic numeral silvered dial with blued steel hands and aperture to allow viewing of the escapement, the heavy brass, damascened movement with finely cut wheel train and five spoke crossings, jewelng at the escape wheel, pallet arbor and pallets, Graham dead beat escapement, Harrisons maintaining power, dust shields, and finely engraved escapement cocks, four jar mercury compensated pendulum with brass frame and nickel plated jars, and brass clad weight with integral pulley.

**Condition:** case very good, with a few minor bumps and dings, not original to movement, the movement, dial and pendulum having been a special order from E. Howard & Co. without a case, dial grained and resilvered, movement running, serviced by a skilled restorer and very good overall, escape wheel replaced, pendulum jars with minor oxide and dirt, rod with minor oxide, weight a very well made replacement, with minor marks and fine scratches. Repaired and serviced by a skilled restorer.

**\$100,000 - \$150,000**  
 Circa 1900 51.75in x 17.625in x 10.5in

*This clock was a special order, placed by Dr. William Rollins of Boston Mass. The E. Howard & Co. factory records contain an entry dated April 27, 1898, which reads as follows: "1 old style regulator movement, arranged to run a year, 14" silvered astro dial, brass weight, etc., all to be mounted on a mahogany board that the Dr. will furnish made according to our dimensions net cash \$200.00 Complete June 29, 1898". While Dr. Rollins residence was at 399 Marlborough St., his dental practice was located at number 250, so the use of the 250 Marlborough Street address in the E. Howard books would suggest that the clock may have been ordered for use in his office. The clock was delivered without a case, but an image survives of a Howard hanging timepiece in the collection of R.S. Stevens, which the present case was modeled after. The locking collar on the great wheel is inscribed on the interior "Set up 5 1898 LP Emerson Roxbury Mass". Emerson was foreman of the Howard movement department, and in charge of setting up special trains. As far as is known, this is the only year running regulator ever made by E. Howard & Co. Dr. William Rollins (1852 - 1929) earned degrees in dentistry and medicine from Harvard University.*

*Possessed of an inquisitive mind, his avocational studies included physics, astronomy, photography, and radio communications, but his most important and enduring work was in the use of the x ray. He was among the first to warn of the potential dangers of exposure to x rays, although his warnings were generally dismissed as sensational, or entirely ignored. His work led him to develop rules for the safe use of the new technology, as well as protective measures and equipment for use by x ray technicians and their patients.*



Movement of the present lot



Dr. William Herbert Rollins



## An important sidereal standing regulator from the Waltham Watch Co. Observatory vault

**455**

Waltham Clock Co., Waltham, Mass., an important sidereal standing regulator from the Observatory vault of the Waltham Watch Co., walnut case with figured walnut veneers and molded base, the trunk glazed on four sides, and lift off bonnet glazed on four sides, and with access doors at the front and back, 24 hour signed silvered dial with open center, brass bezel and blued steel hands, movement with gilded triangular plates having scalloped edges, skeletonized back plate, jeweled escape wheel pivots, Harrison's maintaining power, four legged gravity escapement with jeweled pivots and pallets, jeweled two second break circuit mechanism for connection to the observatory's printing chronograph, and gilded A frame pendulum bracket with chamfered supports, all mounted to a spotted iron seat board, nickel plated mercury compensated pendulum with steel jar below a brass fine regulation nut, and nickel plated cylindrical weight

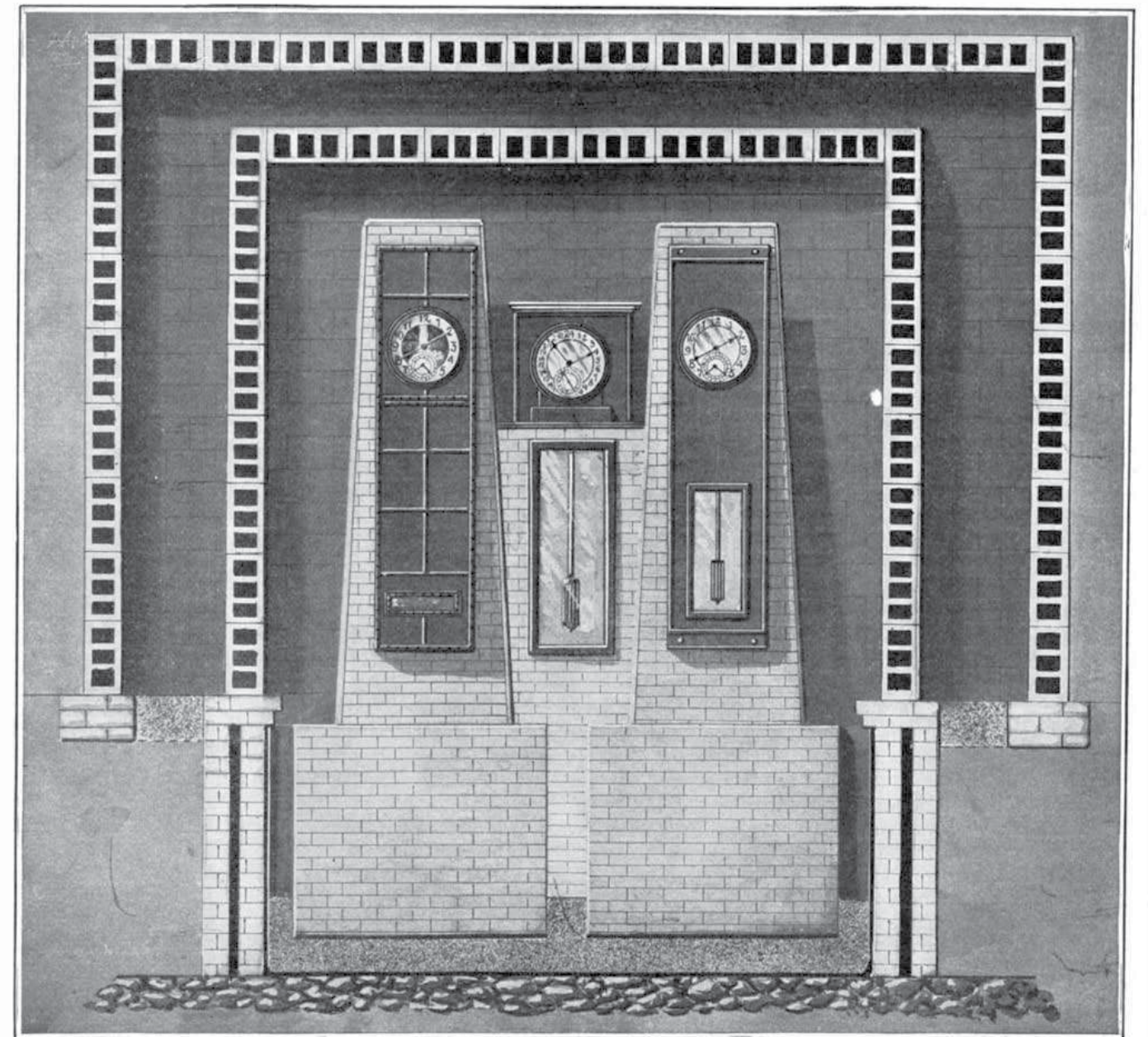
**Condition:** running, walnut case with some sun bleaching and bloom to finish at base, dial lacquer with minor discoloration, hands with minor bends, otherwise good, movement very good overall, pendulum bracket with small casting flaw at top, seat board with minor localized oxide, nickel plating on pendulum and weight with tiny blisters, minor losses and oxidation, running. Repaired and serviced by a skilled restorer.

**\$90,000 - \$120,000**

Circa 1900 75.5in x 20.5in x 14.75in

*(Movement featured on inside of catalog front cover)*

By the end of the 19th century, the Waltham Watch Company's operations had increased to the point that their observatory time standard clocks were being disturbed by vibration generated by the machinery. A new clock room was completed in 1904 which addressed the various shortcomings of the previous location. The clocks were fixed to masonry piers that were insulated from vibration, and the room was temperature and humidity controlled. The two existing standard clocks from the original location, one with hermetic cast iron case with provision for reducing its interior atmospheric pressure, the other also cast iron, but without provision for atmospheric control were installed in the new clock room. The "mean time clock", at the right in the illustration, had a 12 hour dial and was used to send time signals throughout the factory. The "astronomical clock", at the left had a 24 hour dial, and could also send signals to the factory if required. The present lot is the central sidereal clock, added upon completion of the new room, and used as the standard for checking the others. The movement with dial, weight, and pendulum were removed from the vault in the mid 20th century, and cased for domestic use. See chapter 13 in Derek Roberts "Precision Pendulum Clocks France, Germany, America, and Recent Advancements" for more information on Waltham precision clocks.



The building is designed to protect the clocks from disturbing influences that would cause variations in the time. Temperature changes and moisture are precluded by the double walls and ceiling providing an 18-inch air space between. Vibrations are avoided by placing the clocks on heavy masonry piers built on a bed of sand. The pair of clocks in the front are the master clocks, which, by electrical connections, give the time throughout the works. The sidereal clock to the rear which is checked, twice each week, by observing the transit of the stars, serves as the standard for the whole works.

American Waltham Watch Co.'s New Clock Room as illustrated in Scientific American, April 15, 1905



**A good seconds beating  
inverted hanging regulator  
by Charles Fasoldt**

**456**

Charles Fasoldt, Albany, New York, for Dr. J.V.C. Teller, a good seconds beating inverted hanging regulator, the three light case with metal frames finished with gold leaf, the door frame with half round profile, molded mahogany base, the interior of the back with highly figured mahogany veneer, and the top with molded cornice surmounted by a carved crest with central plinth, and a separate, shaped board with figured mahogany veneer concealing the adjustable pendulum suspension bracket, reverse painted roman numeral glass dial with heavy brass bezel and blued steel hands of Fasoldt's pattern, the two jar, nickel plated, mercury compensated pendulum suspended above the weight driven, 15 day movement with heavy brass shaped plates of Fasoldt's design, and with his patented Improved Chronometer Escapement, the lower portion of the front plate engraved "Made For Dr. J.V.C. Teller", above a plate engraved "C. Fasoldt Albany NY Pat. Feb. 1 1859 Mar 7 1865", and base molding with brass plaque which reads "Presented by Dr. J. Ivimey Dowling former property Dr. William E. Milbank".

**Condition:** gilding on case exterior restored, door with losses to gilding at right, wooden components refinished, base molding and crest with old repairs, dial restored, hour hand with minor oxide at tip, nickel plating on pendulum with minor wear and oxidation, movement good overall, stop work finger and plate at barrel arbor with dings and scratches, running, serviced and repaired in 2019 by a skilled restorer.

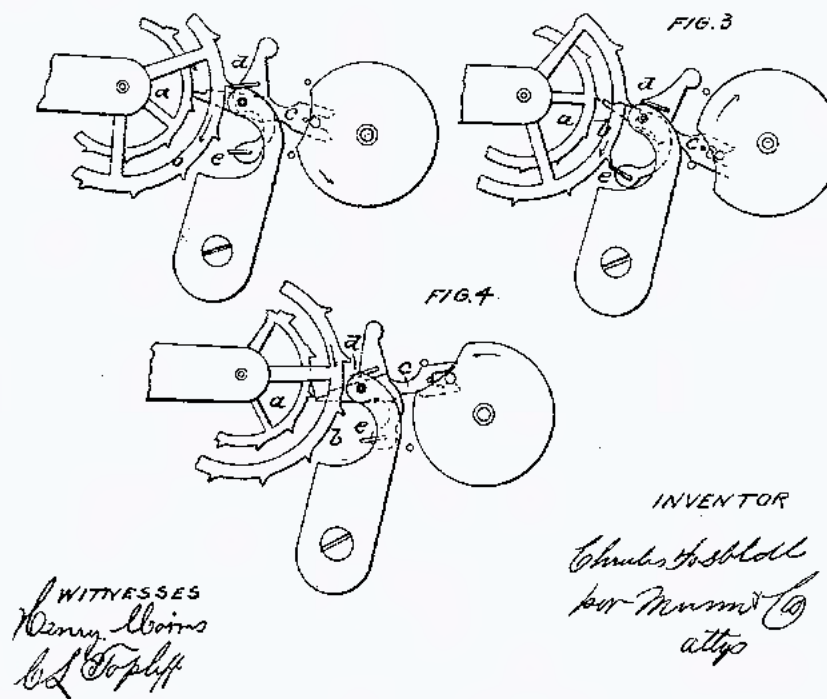
**\$80,000 - \$120,000**  
Circa 1865 69in x 17.625in x 9.5in

Charles Fasoldt (1818 - 1889) emigrated to the United States in 1849 following the failure of the May Uprising in Dresden. He settled in Rome, N.Y., and advertised watch and chronometer making and repairing, as well as gilding and the manufacture of other mechanical instruments. He was granted a patent for a clock escapement in 1859, which would be further developed into his Improved Chronometer Escapement, patented in 1865. This escapement would be employed in the majority of his clocks and watches, as it is in the present lot. He is well known for his unique approach to clock and watch making, and is one of the most significant independent horologists of the second half of the 19th century.

While little biographical information is available regarding Dr. James V.C. Teller (1802 - 1869), his advertisements in newspapers from Ohio to Virginia do reveal significant information regarding his metier. He was a specialist in the treatment of "all forms of private diseases", at his "Old Established Hospital", located at 5 Beaver St., Albany, N.Y. He also claimed cures for "love of solitude", "aversion to society", and "young men addicted to secret habits". According to his advertisements, he treated "more than 20,000 cases annually, with immense success". Teller also published a book that he claimed had sold more than 600,000 copies, titled "Dr. Tellers Pocket Companion or Marriage Guide", which contains medical information, advice, and advertisements for his treatments, medical devices, and patent medicines that were available through his practice.



Partial view of movement of the present lot



Drawing from Fasoldt's March 7th, 1865 Escapement Patent



Charles Fasoldt



**A rare and important  
E. Howard & Co.  
sidereal regulator  
made for the  
observation of the  
1874 Transit of Venus**

**457**

E. Howard & Co., Boston, a rare and important sidereal astronomical regulator made for the observation of the 1874 Transit of Venus, the dovetailed, rectilinear pine case with two part glazed door, the joint just below the dial, the frame and panel back board with heavy cast iron movement mounting bracket and silvered beat scale, signed, arabic numeral white painted astronomical dial with blued steel hands, signed, weight driven brass movement with four legged gravity escapement, the arms with jeweled pivots and locking, Harrison's maintaining power, hunting tooth stop work and mercury compensated pendulum with nickel plated rod, large, mercury filled cylindrical steel bob, and four arm fine regulation nut, serial #627.

**Condition:** in an old refinish, back edge of case sides with a bit of paint from a careless workman, scattered dings, minor scratches, and minor staining, a few small chips, four small holes in right side near top, two small holes at top of door, lower left dovetail joint a bit loose, and now with hook and eye support, door catch and lock functional, lacking weight baffle, door panel replaced with transparent glass (panel survives and is included with the lot), porcelain knob on door catch with small loss, dial with very minor losses to paint at edge and light wear to seconds bit, hands good, movement a bit dirty, pendulum with minor losses to plating and minor oxide, bob now filled with lead shot, running.

**\$70,000 - \$100,000** Circa 1874 57in x 18.25in x 10.25in

*In 1874, the United States, Great Britain and France assembled teams to observe the Transit of Venus, in an effort to collect data to be used to further refine the calculated value of the Astronomical Unit, the average distance of the sun from earth. A more accurate AU would allow astronomers to more precisely calculate the distances of other celestial bodies from earth and each other, and ultimately gauge the size of the solar system. The US government ordered eight sidereal regulators from E. Howard & Co. in May of 1874 to be used by the American expeditionary teams, stationed at various points around the globe.*

*The clock offered here was stationed at Whangaroa Bay in the Chatham Islands, roughly 430 nautical miles east of New Zealand's South Island. The timepiece was returned to the US Naval Observatory following the transit observations, and redeployed in 1884 to their observatory at Mare Island, which provided time signals to the Pacific coast and for navigational purposes. A companion clock from the expeditions, transit regulator #624, is discussed in Derek Roberts "Precision Pendulum Clocks: France, Germany, America, and recent advancements".*



Observatory and equatorial telescope at Whangaroa Bay, Chatham Islands, 1874 (left) and the observatory at Mare Island Naval Shipyard in Vallejo, California, 1904 (right)



**A T. Cooke & Sons sidereal and mean time astronomical regulator with seven leg gravity escapement**

**458**

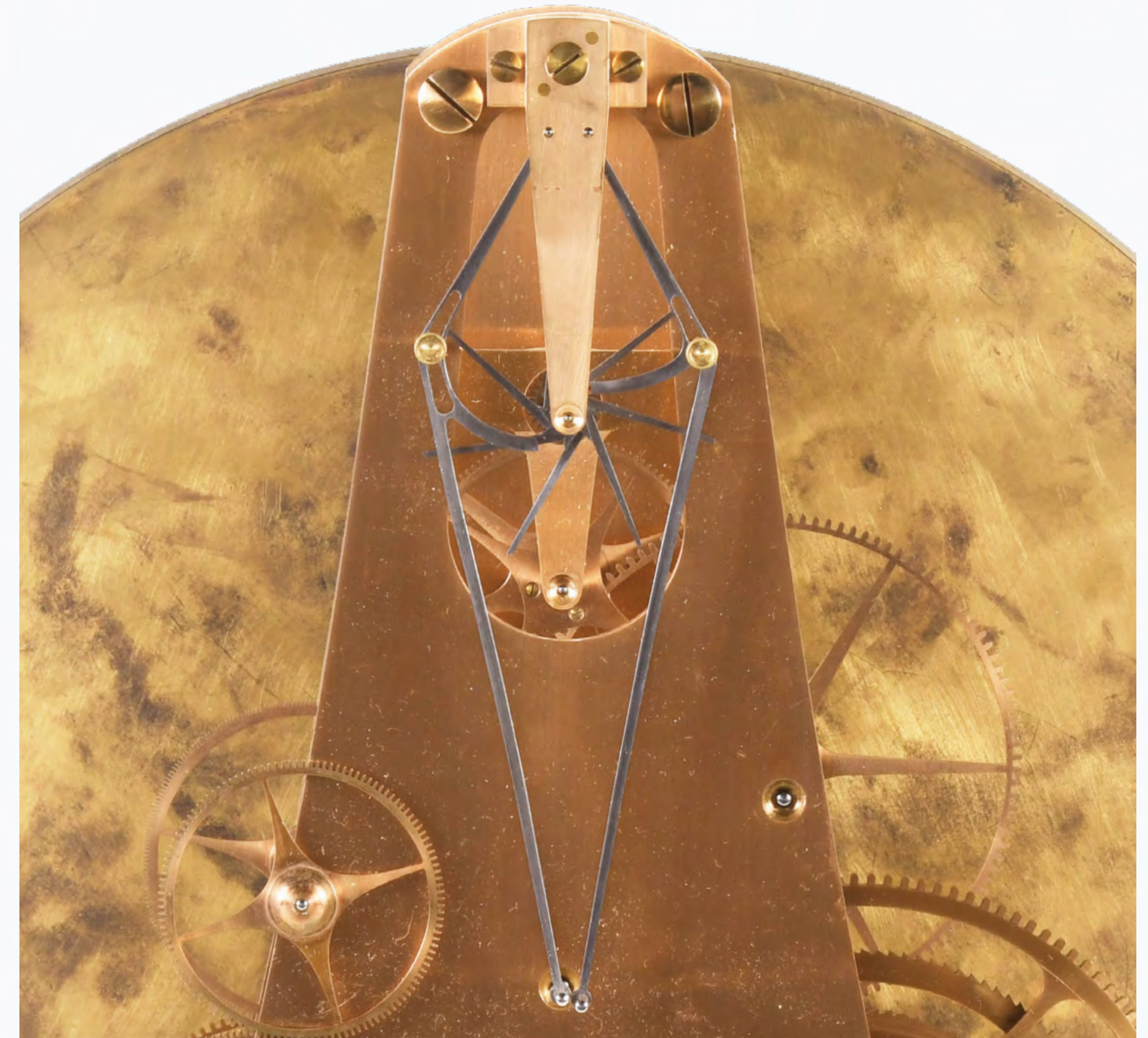
T. Cooke & Sons, York & London, a late 19th century astronomical regulator displaying mean and sidereal time, the upper portion of the mahogany case with hinged, four light lift off enclosure with brass joints and shuttered winding aperture in the front glass, the base with panels on three sides, the back board also of frame and panel construction and with mahogany veneer, barometer/ thermometer with silvered dial, and silvered beat scale, 14 inch silvered astronomical dial with mean and sidereal chapters below the center, large sidereal seconds bit above, sidereal minutes at the periphery, and blued steel hands, the large, weight driven movement with shaped plates, very well made high count wheels and pinions, Harrisons maintaining power, and seven leg gravity escapement, sidereal seconds beating pendulum with brass sheathed bob engraved with crown, cipher, and "Solar Physics 35", with hole for steadying the bob while adjusting the regulating nut, and scale showing the change in the bob position, driven by a brass clad weight with attached pulley. Provenance - Norman Lockyer Observatory Corp., Hill Observatory, Salcombe Regis, Sidmouth, Devon, Christies sale 7410, lot 132, Cottone Auctions, March 2023, lot 35

**Condition:** case good overall, mahogany with sun bleaching, back board with splits to veneer from panel shrinkage, barometer and beat scale good, dial and hands very good, pendulum bob with minor spotting, weight with minor localized spotting, running. Recently serviced by a skilled restorer.

**\$40,000 - \$60,000**  
 Circa late 19th century 77.75in x 19.75in x 14in

*Thomas Cooke (1807 - 1868) was born into a poor family, and received very little in the way of formal education. Having taken an interest in the voyages of James Cook, the young autodidact studied navigation, astronomy, mathematics and optics. While he never went to sea, he did use his accumulated knowledge to teach local children, and eventually established a school at Skirpenbeck, Yorkshire, England. He later taught mathematics at Rev. Shackley's school, and in his free hours experimented with the manufacture of telescopes. In 1836 he founded his first scientific instrument works, manufacturing telescopes, surveyors tools, and other instruments. He opened a turret clock manufactory in 1852, and by 1860 had achieved an international reputation.*

*That he was not trained as a clockmaker is evident in the design of the present timepiece, from the unconventional gravity escapement to the shape of the movement plates. That said, the movement construction and finishing are on par with the leading makers of his day. See Derek Roberts "English Precision Pendulum Clocks", pages 137 - 139 for descriptive text and images of this regulator. Roberts comments that "It employs a seven legged gravity escapement, the only one we can recall having seen...". We have been unable to locate any other 7 leg escapements, and so this clock may well be unique.*



Partial view of movement of the present lot featuring Cooke's unconventional seven leg gravity escapement



## 459

Dent, London, a fine mid 19th century hanging precision regulator, the case with glazed mahogany four light enclosure, backboard with heavy iron mounting plate at the top and expertly carved bottom bracket, signed roman and arabic numeral silvered astronomical dial with blued steel hands, signed damascened brass movement with Graham deadbeat escapement, jeweled escape wheel pivots and jeweled pallets, crutch with fine beat adjustment, Harrisons maintaining power, hunting tooth stop work, and attached to very substantial damascened mounting brackets, driven by a small cylindrical weight with dark patinated surface, the seconds beating pendulum with Buckney's compensation, tray for fine rating weights, electromagnetic control attachment interacting with a coil on the back board, and dark patinated finish

**Condition:** case with a few minor bumps and dings, old repair to back board at lower left, filled holes in back board to left and right of movement, and at lower left, likely from removed electrical components, bottom bracket with localized alligating and minor loss of finish, also with a bit of white paint at the bottom edge, dial very good, bezel with small dark spot, movement excellent, serviced by a skilled restorer, running, escape arbor with a small 12 tooth wheel, the teeth in groups of six and at 180 degree opposition, the plates with cut out to clear another small component, also attached to the escape arbor, and the cannon pinion with projection opposite counterweight, all related to the electrical components previously removed, pendulum and weight with a few minor fine scratches. Serviced and repaired by a skilled restorer.

*Thomas Buckney Jr. (1838 - 1900) was put in charge of Dent's manufacturing department in 1864, and would become a partner in the firm in 1872. He was an advocate for the use of zinc and steel rods for compensated pendulums, as he felt that mercury compensation responded too slowly to changes in temperature. His patented pendulum was an improvement over previous zinc/steel pendulums in that perforations in the zinc and steel rods allowed for the exposure of more surface area, causing them to more rapidly respond to changes in ambient temperature. He also made provision for variable points of attachment at the top of the zinc and steel rods, enabling adjustment of the degree of compensation. Buckney ran the Dent firm until his death in 1900 at age 61. A photograph of this clock is included in Vaudrey Mercer's "Edward John Dent and His Successors", plate 148, page 609, but unfortunately there is no text relating to the clock other than the brief note that appears below the image. As would be expected in a regulator by this famous firm, the construction and finishing of the components is exceptional.*

**\$25000-\$35000** Circa 1865 65.75in x 12.25in x 7.75in





**460**

Waltham Clock Co., Waltham, Mass., for Smith Patterson Company, Boston, Mass., a "No. 64 Pattern" hall clock, solid mahogany case with heavily carved scroll top, turned fluted columns with carved capitals and silk lined frets, the trunk with fluted and carved columns, the door with leaded glass, the sides with beveled glasses, and base with heavily carved, recessed panel and large carved paw feet, composite dial with silvered chapter ring and applied brass arabic numerals, silvered subsidiary dials for seconds, chime / silent and Westminster / Whittington tune selection, and moon phase display in the arch, eight day, three train, movement driven by three brass weights and chiming the quarter hours on nine signed tubular bells

**\$3000-\$4000** Circa 1905 102in x 29in x 19in



**461**

Luman Watson, Cincinnati, Ohio, an early 19th century tall clock with solid cherry case, the hood having broken arch top, unusual finial, and flanked by turned columns, the trunk door serpentine top and full length oval inlay of dark mahogany surrounded by contrasting stringing and flanked by chamfered corners with lamb's tongue terminals, all resting on a plain base with simple skirt, the colorfully painted and gilt arabic numeral wooden dial is signed "L. WATSON CINCINNATI. with a grape arbor scene in the arch and patriotic shield spandrels, subsidiary seconds and date, pewter hands, 30 hour, two train wooden movement striking on a bell, driven by two tin canister weights

**\$2000-\$3000** Circa 1825 90.5in x 18in x 9.5in



**462**  
 Chelsea Clock Co., Boston, Mass., "Mahogany and Metal" or "Commander" mantel clock in a bronze case mounted on a mahogany base, 12in Special Grand dial with silvered chapter ring and raised arabic numerals, eight day, time and house strike, spring driven brass movement with eleven jewels and lever escapement, serial #162925 on both movement and rear of dial

**Condition:** ticking and striking; case is in excellent condition; dial in excellent condition with minor oxidation; mahogany base is a later Chelsea factory model produced to original specifications. Chelsea factory records indicate this clock was shipped on August 16, 1926 to Clock Dealers, Inc. of New York, during the last year in which Chelsea offered both the 12" striking model and their "Special Grand" dial. The Chelsea factory claims this is one of only nine clocks with 12in Special Grand dials that are known to survive.

**\$10000-\$15000** Circa 1926 19.0in x 19in x 6.75in



**463**  
 Welch, Spring & Co., Forestville, Conn., a Gale "24-inch Gallery" calendar wall clock with rosewood veneered case, painted metal dial, moon hands, and eight day, double wind spring driven brass movement regulated by a pendulum

**Condition:** Rosewood veneered case in good condition with a newer finish, with veneer repairs to the front edge, veneered door has rough areas and repairs, original painted dial is in good condition for its age with some scuff marks, small loss at the mounting screws and small chips at the bottom calendar dial, original hands and door glass.

**\$5000-\$7000** Circa 1871 30.5in x 30.5in x 4.75in



**464**

Ithaca Calendar Clock Co., "Box Skeleton" double dial perpetual calendar mantel clock with nicked cast metal skeletonized frame, and contained in a glazed walnut cabinet with ebonized moldings, nicked cast metal dial chapter rings, chapter ring for time with roman numerals and chapter ring for calendar with arabic numerals, eight day, time and strike, spring driven movement

**Condition:** walnut case has a good finish and in good condition overall, rollers have been repapered, hands appear original, front door glass is period, rear glass replaced, movement is clean. **A very rare clock and only the second complete example we have sold in the last ten years.**

**\$5000-\$7000**

*Circa 1875 22.5in x 11.75in x 7.75in*



# SCHMITT HORAN & CO.

*Seeking Fine Consignments*

Contact Us for a Confidential Appraisal

Spaulding & Co.

Chicago.

**Sold \$42,000**

*April 28, 2024*

A minute repeating split second chronograph with perpetual calendar by C.H. Meylan





**465**

J.C. Brown, Forestville Mfg. Co., Bristol, Conn., "Acorn" shelf clock, mahogany case with laminated door and side arms with acorn finials, two reverse painted tablets, roman numeral painted metal dial signed "Forestville Manufacturing Co. Bristol CT U.S.A.", case back with card stock manufacturer's label applied over a green papered background and reading "Eight Day Spring Clocks Manufactured by J.C. Brown", also with an additional label from a Dayton, Ohio repair shop dated 1879, eight day, time and strike, spring driven brass movement with lyre plates and two remote fusees attached to the case bottom

**\$2000-\$3000** Circa 1840 24in x 15in x 5.5in



**466**

Birge & Fuller, Bristol, Conn., steeple on frame with candle finials or double steeple shelf clock, mahogany veneered case, painted metal dial with spade and pointer hands, and eight day, time and strike wagon spring driven brass movement

**\$1200-\$1600** Circa 1845 26in x 13.75in x 4in



**467**

Atkins Clock Co., Bristol, Conn., "London Mantel", mantel clock, rosewood veneered case, painted metal dial with club hands, and 30 day, time and strike spring driven brass fusee movement.

**\$1000-\$1500** Circa 1860 16.5in x 12.75in x 6in



**468**

Tiffany & Co., New York, NY, mantel clock in an octagonal, gilded cast brass case with raised ornament and stamped "TIFFANY & CO." on base, 8in silvered "Special" dial by Chelsea Clock Co. with raised arabic numerals, eight day, time and house strike spring driven movement with lever escapement and Chelsea Clock Co. signature, serial #180034

**\$2500-\$3500** Circa 1928 14.5in x 13.25in x 7in



**469**  
Elmer Stennes, Weymouth, Mass., a 20th century girandole clock, gilt mahogany case with painted metal dial, Curtis type hands, and eight day, weight driven brass movement. Case is stamped "41" and "73"

**\$2000-\$3000** Circa 1973 43.5in x 12in x 4.75in



**470**  
Foster Campos, Pembroke, Mass., presentation banjo clock, mahogany case with painted metal dial and reverse painted throat and lower tablets, Curtis type hands, and eight day, weight driven brass movement. Case is stamped "5" and "85"

**\$1000-\$1400** Circa 1985 41in x 10.5in x 4in



**471**  
Elmer O. Stennes, Weymouth, Mass., carved true lyre banjo clock, mahogany case with reverse painted tablet, painted metal dial, Curtis type hands, and eight day, weight driven brass movement

**\$1500-\$2500** Circa 1973 41in x 10.5in x 4.5in



**472**  
Foster S. Campos, Pembroke, MA, mahogany banjo clock in Campos' unique interpretation of an Attleboro style case with unique carved side arms, no. 1 in a series of 2

**\$1200-\$1600** Circa c1991 42in x 10.5in x 3.75in



**473**  
Chelsea Clock Co., Boston, Mass., for Tiffany & Co., NY, a “Wardroom” hanging clock in a heavy cast bronze concentrically stepped case with glazed bezel and mounted on conforming mahogany back, 8.5in inch silvered dial with arabic numerals and blued steel moon hands, eight day, time only, spring driven rectangular brass Model F movement with lever escapement and cut bimetallic balance, serial #154609

**Condition:** ticking; the case is in excellent condition with a few minor scratches; dial in excellent condition with some minor losses near winding arbor; excellent example of a rare and desirable clock. According to “Chelsea Clock Company, The First Hundred Years” by Demeter these are extremely rare models, and this example is the first Wardroom model we have handled with an 8.5in dial.

**\$3000-\$5000** Circa 1924 17in x 17in x 6in



**474**  
Chelsea Clock Co., Boston, Mass., "Regulator No. 3" hanging clock in a quarter sawn oak case, arabic numeral painted metal dial with moon hands, eight day, time only brass movement with maintaining power driven by a single brass weight, serial #26210

**\$2500-\$3500** Circa 1906 37in x 16in x 6in



**475**  
E. Howard & Co., Boston, Mass., "No. 13 Regulator", the black walnut case with painted, roman numeral metal dial and diamond form hands, reverse painted tablet, and eight day, weight driven timepiece movement with dead beat escapement, damascened plates and pendulum bob

**\$3000-\$4000** Circa 1874 56in x 16.75in





**476**  
 Chelsea Clock Co. Boston, Mass., "Marine" hanging engine room clock for Crosby Steam Gage & Valve Co., Boston, U.S.A in a round nickel plated brass case mounted on a mahogany base, arabic numeral 10in silvered brass dial marked "CROSBY STEAM GAGE & VALVE CO. BOSTON U.S.A", with blued steel moon hands and eight day, time only, spring driven Model E movement with seven jewel lever escapement and Chelsea signature, serial #42154 (movement) and #00572 (dial)

**\$2000-\$3000** Circa 1909  
 17.25in x 17in x 7in



**478**  
 E. Howard & Co., Boston, Mass., "No. 3 Regulator" hanging banjo clock or patent timepiece in grain painted cherry case with reverse painted throat and lower tablets, eight day, weight driven, brass movement

**\$2000-\$2500** Circa 1910 38in x 15.75in x 5in



**479**  
 E. Howard & Co., Boston, Mass., "No. 70-14 Regulator" hanging clock in an oak case with reverse painted tablet, 14 inch painted metal dial, spade hands, and eight day, weight driven brass movement

**\$1500-\$2000** Circa 1900 35in x 18in x 5in



**477**  
 E. Howard & Co., Boston, Mass., "No. 69" marine or locomotive clock for McKay & Aldus, Boston, Mass., in a bronze case with glazed bezel, arabic numeral silvered brass dial with signature for "MCKAY & ALDUS / BOSTON, MASS., / U.S.A. 1866." with six figure display for recording of revolutions through the arbor extending from the right side of the case, eight day, time only, spring driven movement with lever escapement with additional counter mechanism by American Steam Gage Co., Boston, serial #8138 on dial

**\$3000-\$5000** Circa 1866  
 12in x 12in x 4.5in



**480**

E. Howard & Co., Boston, Mass., "No. 73" hanging gallery clock in an ebonized oak case with reverse painted and gilt glass dial, eight day, time only, weight driven brass movement with E. Howard & Co. signature

**\$2000-\$3000** Circa 1900 33.5in x 31in x 7.75in

**481**

E. Howard & Co., Boston, Mass., "No. 89 Regulator", oak case with "STANDARD CLOCK" in gold leaf on the door glass, 12 inch roman numeral painted metal dial with seconds bit, blued steel diamond hands, and eight day, time only, weight driven movement with Howard signature regulated by a pendulum

**\$1500-\$2000** Circa 1889 65in x 19in x 8.5in





**482**  
New Haven Clock Co., New Haven, Conn., "Low Tile" No. 1017 mantel clock, cast brass frame with mossy green-colored Chelsea ceramic tiles depicting winged putti and sand glasses, cast bezel with beveled glass, two piece enamel dial with arabic numerals, and black steel hands, eight day, time and strike movement with open escapement and striking on a gong

**Condition:** ceramic tiles very good, the brass frame has darkened, with some verdigris spotting on the top portion, outer enamel dial with hairlines and a large crack between 2 and 3 o'clock, the wooden rear cover is a replacement. Other examples of this model have raised letters that identify the tile maker as J & J.G. Low of Chelsea, Massachusetts, although the tiles on this clock are unmarked.

**\$1500-\$2000** Circa 1885 12.5in x 10in x 5.75in



**483**  
 F. Kroeber Clock Co., New York, NY, "Noiseless Rotary No. 1", conical pendulum shelf clock, ebonized wood case, paper on metal dial, maltese hands, and eight day, spring driven brass movement

**\$1000-\$1500** Circa 1882 20.5in x 11in x 11in



**484**  
 Seth Thomas Clock Co., Thomaston, Conn., "Office Calendar No. 13" wall clock, quarter sawn oak case, 12 inch painted metal dials, eight day, weight driven time only brass movement with a R.T Andrews patented perpetual calendar mechanism

**\$1800-\$2500** Circa 1892 49in x 18.75in x 7.5in



**485**  
 Seth Thomas Clock Co., Thomaston, Conn., "Regulator No. 30" hanging clock in a cherry case, arabic numeral painted metal dial, spade hands, and eight day, weight driven brass timepiece movement with maintaining power and dead beat escapement

**\$1200-\$1600** Circa 1909 49in x 18.75in x 7.25in



**486**  
 Welch, Spring and Co., Forestville, Conn., "Gale Drop Model No. 2", hanging calendar clock, grain painted and rosewood veneered case, paper on metal dial, and eight day, time and strike spring driven brass movement with Welch club tooth escapement

**\$1500-\$2000** Circa 1875 30in x 17in x 4.5in



**487**

E.N. Welch Mfg. Co., Forestville, Conn., a rare "Unknown No. 25" in a spelter amphorae form case, roman numeral painted zinc dial, moon hands, and eight day, spring driven Patti style movement striking on cathedral bell

**\$1000-\$1200** Circa 1886 18.5in x 11in x 11in



**488**

George W. Brown & Co., Bristol, Conn., a rotary pendulum novelty timepiece with brass and wood case, paper on metal dial, fancy blued steel hands, and 30 hour, spring driven brass movement with conical pendulum. This example might date earlier to the time of John C. Briggs, the inventor of the timepiece.

**\$800-\$1200** Circa 1863 6.25in x 5.5in x 5.5in



# SCHMITT HORAN & CO.

*Seeking Fine Consignments*

**Sold \$9,000**

August 10, 2024

An early 20th century  
Schoenhut Humpty Dumpty Circus

Contact Us for a  
Confidential Appraisal

sales@schmitt-horan.com  
603.432.2237



# Index

American Waltham Watch Co. 429,  
Astronomical Regulator 457, 458, 459  
Astronomical Regulator (Dent) 459  
Atkins Clock Co. 467  
Beam Engine 442  
Beha, Johann Baptiste 448  
Birge & Fuller 466  
Box Skeleton (Ithaca Calendar Clock Co.) 464  
Bracket Clock 447  
Briggs Rotary Novelty Timepiece 488  
Brown & Co. George W. 488  
Brown, J.C. 465  
Calendar Clock 463, 464, 484, 486  
Campos, Foster S. 470, 472  
Carriage Clock (Foreign) 432-439  
Chelsea Clock Co. 462, 468, 473, 474, 476  
Commander (Chelsea Clock Co.) 462  
Crosby Steam Gage & Valve Co. 476  
Cuckoo Clock 448-450  
Doret, P.H. 425  
Elgin National Watch Co. 430  
Fasoldt, Charles 456  
Forestville Mfg. Co. 465  
French Industrial Series 440, 442, 443  
Frodsham, Charles 431  
Gale Calendar Clock 463, 486  
Gale Drop Model No. 2 (Welch, Spring & Co.) 486  
Girandole Clock 469, 470  
Harrison, John 427  
Howard Clock Co., E. 451, 453, 454, 475-481  
Ithaca Calendar Clock Co. 464  
Kroeber Clock Co. F. 483  
Lighthouse 443  
Locomotive Clock (E. Howard & Co.) 477  
London Mantel (Atkins Clock Co.) 467  
Low Tile No. 1017 (New Haven Clock Co.) 482  
Lyre Clock (Foreign) 446  
Mystery Clocks and Swingers 444  
New Haven Clock Co. 482  
No. 69 Marine (E. Howard & Co.) 477  
No. 73 Gallery Clock (E. Howard & Co.) 480  
Noiseless Rotary No. 1 (F. Kroeber Clock Co.) 483  
Office Calendar No. 13 (Seth Thomas Clock Co.) 484  
Precision Clock (Seth Thomas Clock Co.) 452  
Princeton University Observatory 453  
Regulator No. 3 (Chelsea Clock Co.) 474  
Regulator No. 3 (E. Howard & Co.) 478  
Regulator No. 30 (Seth Thomas Clock Co.) 485  
Regulator No. 70-14 (E. Howard & Co.) 479  
Regulator No. 89 (E. Howard & Co.) 481  
Rotary Pendulum 483, 488  
Seth Thomas Clock Co. 452, 484, 485  
Sidereal Regulator (E. Howard & Co.) 457

Sidereal Regulator (T. Cooke & Sons) 458  
Sidereal Regulator (Waltham Clock Co.) 455  
Steam Engine 440, 442  
Stennes, Elmer 469, 471  
Tall, Hall, Grandfather, Floor Standing Clock 460, 461  
Tiffany & Co. 468, 473  
Tobias, S. I. 426  
Transit of Venus 457  
Unknown No. 25 (E. N. Welch Mfg. Co.) 487  
Verhagen & Co. J. 428  
Waltham Clock Co. 455, 460  
Watson, Lumen 461  
Welch Mfg. Co., E. N. 487  
Welch, Spring & Co. 463, 486, 487

## Schmitt Horan & Co. General Terms & Conditions

SALES TAX and BUYER'S PREMIUM: You agree to pay the Buyer's Premium on every item purchased. The Buyer's Premium is a percentage of the hammer price of each item added to the sale total for that item. There is NO sales tax in New Hampshire. The Buyer's Premium is 20% of the hammer price.

SPECIAL EVENT: The special event portion of the November 2 auction (Lots 1 - 405) will not offer phone bidding, internet bidding, nor absentee bidding. Bidder must be in attendance or have someone represent them in attendance to bid. See list of recommended Buyer's Agents below for suggestions.

LIVE BIDDING: The November 2 auction is open to the public and live in-person attendance is allowed and encouraged. On items after lot 405 we also offer several alternatives to attending in person, including our own live bidding software at bids.schmithoran.com. You may also bid live at www.invaluable.com or www.liveauctioneers.com or www.bidsquare.com. The total Buyer's Premium for third party platforms purchases is 28%, which includes an 8% fee charged by the third party. Because of the inherent delay in and the remote nature of online bidding, any item sold through any of the various online platforms may be reopened at the discretion of the auctioneer at anytime during the auction.

PHONE BIDS: On items after lot 405 you may register to bid via telephone. It is necessary to contact us at least to 72 hours prior to the auction to arrange for phone bidding. Pre-registration is required.

ABSENTEE or LEFT BIDS: In all cases, a left or absentee bid will be executed for as low a price as possible. Many absentee bids lose by only one bid, a frustration that can be reduced if a live person has authority to bid "one more time". Therefore, we offer **PLUS ONE (+1)** bidding format to allow our absentee bidders to be more competitive, contact us for details. Bid forms are available on our web page or in the rear of the catalog. Bids submitted online, by fax, snail mail or e-mail to: **bids@schmitt-horan.com** must be received no later than 48 hours prior to the start of the auction. Absentee bidding and phone bidding services are provided by Schmitt Horan & Co. as a courtesy to our clients. Schmitt Horan & Co. cannot be held responsible or liable for failure to receive or execute absentee bids.

PAYMENT FOR SUCCESSFUL BIDS: We will normally notify successful bidders within three business days of the auction. We use e-mail to notify bidders and postal mail if a client does not have e-mail available. Personal checks drawn on a U.S. bank are acceptable. We also accept VISA, Mastercard, Discover, American Express and Paypal, all subject to an additional 3% processing fee. Note that shipping charges are extra and will be billed by Schmitt Horan & Co. or a third party at the time of shipment. Payment is due on receipt of invoice, and no later than 15 days from the date of the auction. Items not paid for within the 15 days from the date of the auction will be charged a 2% monthly interest rate on the balance due. Large international transactions may be performed via wire transfer. Details available upon request.

ITEMS & ACCESSORIES: It is the buyer's responsibility to verify that he / she has received accessories that may be separate when taking possession of their merchandise. Items purchased by bidders off site are not available for pick up during the sale at the auction hall.

ESTIMATES and RESERVES: After each description, we have indicated a high and low dollar estimate that should be used as a general guide. The final price may vary considerably from these estimates. There are few items in this sale with a reserve, or confidential minimum selling price, established with the consignor or vendor. Items failing to sell will be noted in the results sheet as \$0.00.

PHOTOGRAPHS: Please note, some items when photographed, particularly watches, may have shadows, reflections or other marks that are a result of the photographic process and are not permanent. Both buyer and seller grant unrestricted use of auction photographs and prices realized to Schmitt Horan, LiveAuctioneers.com, Invaluable.com and Bidsquare.com.

ITEM DESCRIPTIONS & CONDITIONS: Employees do their best to aid and assist the customer, however any statements made by Schmitt Horan & Co. employees, agents or contractors are not considered a definitive record of what is being sold. The final record of what is being sold in a lot under any and all circumstances is the catalog provided by Schmitt Horan & Co., both printed and online. If there is a discrepancy between employee statements and the catalog, the catalog is the final and ultimate legal record of what is offered in the lot. We do our best to identify restoration, alteration or other condition issues in the condition report. We shall not be held liable for failure to do so. **IT IS THE RESPONSIBILITY OF THE BUYER TO CONFIRM CONDITION PRIOR TO BIDDING. Condition reports are subject to change up to the moment the lot is sold and it is the responsibility of the buyer to review any changes or updates to the condition report until that time.** If the lot description includes the words "as found" or "as is" the item is sold without any guarantees. **All lots containing multiple items are considered in "AS IS" condition and cannot be returned.** General maintenance items such as broken suspension springs, broken or missing weight cords, & missing keys are not mentioned. Most clocks and watches will require cleaning and service after purchase. All costs associated with this are the responsibility of the client. Dimensions are approximate.

SHIPPING: We use outside companies to ship clocks that provides services worldwide: Please see Vendor Section for details. We are often able to offer "in-house" shipping on watches.

PICK UP IN LIEU OF SHIPPING: Purchases by absentee bidders, phone bidders or internet bidders may be picked up no sooner than 3 business days following the sale. You or your agent may arrange pickup by appointment at our office in Candia, NH. Please plan to settle your account at time of pick up. Items left in our custody for over 30 days from the date of the auction will be charged a storage fee of \$25 per item per week, which must be paid before items are released. We shall not be held liable for damage occurring to any item left in our custody after 30 days from the date of the auction.

BUYER'S AGENT: We are increasing access to live bidding agents, who can independently execute your bids the day of the sale. This service provides an independent set of eyes to validate a potential purchase or to provide flexibility in spending needs. Other additional services provided by these agents include careful packing and flexible delivery options. Buyer's Agents generally charge a commission on each successful sale, which they will discuss with you prior to executing your bids.

Agents available for our November 2, 2024 sale are listed below:  
**Clocks, Watches & Antiques**  
John Kovacic jkovacic@verizon.net or (315) 823-1205

RETURNS AND REFUNDS: Returns will be considered only for items that do not conform to catalog description. **UNDER NO CIRCUMSTANCES WILL RETURNS BE ACCEPTED OR REFUNDS ISSUED LATER THAN 30 DAYS AFTER THE AUCTION.** If there is a problem and a refund or adjustment is requested we ask to be notified within one week of the auction and require to be notified ABSOLUTELY no later than 30 days of the auction or 7 business days after the item(s) are delivered, whichever is earliest, no exceptions. Transit damage alone is not sufficient reason to return an item. We will assist in claims against transport companies.

DEFAULT and LITIGATION: **REGISTRATION TO BID INDICATES ACCEPTANCE BY THE BIDDER OF THESE TERMS ENFORCEABLE AS A NEW HAMPSHIRE CONTRACT.** Schmitt Horan & Co. will not be liable for default by either the buyer, consignor or the vendor. No purchase shall be claimed or removed until paid for in full. Schmitt Horan & Co. reserves the right to refuse to accept bids made by a defaulting buyer at any future auction and to collect all costs and attorney's fees from the buyer associated with litigation and storage involving default. All legal disputes arising from this contract shall be disputed, litigated or mediated under New Hampshire law in the State of New Hampshire. All consignors or vendors are represented in our records by either name or a code directly associated with that name and are also a legal party to this contract.

**VENDORS & TRADE RELATIONS**

**Transport/Shipping**

These are blanket wrapped hand delivery specialists. Ask for quotation.

- >Mr. Scott Salzarulo, 200 W. Housatonic, #20, Pittsfield, MA 413-212-1252
- >Ms. Wendy Buckus, 64 Hutchins, Concord, NH, 03301, 603-491-5199, nwtransport@aol.com
- >Mr. Scott Cousins, 22 Nichols St. Merrimac MA 01860, scottcousins22@aol.com, (978) 419-9353
- >Sure Express Worldwide, 110 Industrial Way, Portland, ME 04103, (800) 335-9996, sureexpress@maine.rr.com
- >Marius Popescu, 1421 Amherst Ave, Los Angeles, CA 90025, (310) 866-3744, mariuspopescu2002@gmail.com

**Packing, Crating & Shipping (Standard Big Box Shipping, UPS, FED EX, USPS)**

- >Parcel Room, 1465 Woodbury Ave, Portsmouth, NH 03801 (603) 431-4205, auctions@parcelroom.com
- > The UPS Store, 35 Manchester Rd Ste 11A, Derry, NH 03038, (603) 434-9899, store4686@theupsstore.com
- > Package Central, 1 Freetown Rd, Raymond, NH 03077, (603) 734-9071, info@packagecentral.com

**Barometer Repair**

- >Winchester, MASS, 01890, Wayne Paskerian, (781) 729-0113, winway2@verizon.net

**Clock & Watch Sales & Repair MID-WESTERN & WESTERN STATES**

- >Carlsbad, CA, 92008, Richard Ivkovich, 2916 State St, (760) 729-1225
- >Costa Mesa, CA 92627, Robert Emenger, Buck's Clock Shoppe, 440 E. 17th St, (949) 631-3215, bucksclockshoppe@msn.com
- >Laguna Beach, CA 92651, Dean Armentrout, 2185 Laguna Cyn-#B-1, 949-494-2711, dean-armentrout-antiques.com
- >San Diego, CA, 92103; Time Traveler, Rich Wauson, 4227 Park Blvd, 619-298-5391, rew11ttc@gmail.com
- > Palatine IL, 60067, Tick-Tock Clock Repairs Inc., 342 South Hart St, 847-991-4230, www.ticktockclock.com
- >Mendota Height, MN, 55118, Cutter Edge, Inc 1169 Veronica Ln, (612) 280-5560 wcutter@cutteredge.com
- > Oklahoma City, OK, 73122 Richard Garrett, House of Time, 3144 N MacArthur, (405) 946-0029 rghorologist@hotmail.com

**Clock & Watch Sales & Repair EASTERN STATES & CANADA**

- >Burlington, CONN, 06013; Mel Brown, 37 Village Lane, 860-673-2256 – Tickdoc1@aol.com
- >E. Norwalk, CONN, 06855; The Clockery, 14 Van Zant St, 203-838-1789-www.clockery.com
- >Cromwell, CONN, 06051, Frank De Felice, New Britain Clock Repair, 26 Edgewood St, 860-635-5599
- >North Haven, CONN, 06473, Yankee Clock Peddler, (203) 288-4250, www.yankeeclockpeddlerct.com
- >Tampa , FLORIDA, 33612, Boyd Clock Repair, 11620 N. Florida Ave, (813) 777-3437, boydclocks@gmail.com
- >Harrison, MAINE, 04040, Harry Hepburn, 828 Edes Falls Rd, 04040, (207) 583-2821
- >Saco, MAINE, 04072; Robert Boyd, 60 Shadagee Rd. #24 - 603-801-8292, bobboyd@rlbpab.com
- >Scarborough, MAINE, 04074, Scarborough Hollow Clock Works, 700 US Route 1, Ste 104, (207) 730-7288 - scarboroughhollow@maine.rr.com
- >Amesbury, MASS, 01913, Vincent Harrild, 1 River Ct. Suite 219 - (978) 314-8620, harrildvr@greenet.net
- >Newton, MASS, 02458, Watertown Watch & Clock, 230 California St, (617) 244-3779, chris@watertownwatchandclock.com
- >Swampscott, MASS, 01907, Phillips Clock Shop, 330 Essex St, (781) 593-1333, sales@phillipsclockshop.com, www.phillipsclockshop.com
- >Wayland, MASS, 01778, Michael Poisson, 508-655-1958, mljw92@aol.com
- >Warren, MICHIGAN, 48093; The Clockworks, 8385 Old 13 Mile Rd, (800) 574-9421, jkuechle@clockworks-inc.com, www.colcokworks-inc.com
- >Exeter, NEW HAMPSHIRE, 03833; Barlows Clock Repair, 45 Donna Dr. 603-778-1452
- >Hollis, NEW HAMPSHIRE, Russ Greenwood, 25 Louise Dr, 603-881-8309, rgtimeout44@msn.com
- >Catskill, NEW YORK, 12411; Franklin Micare, 349 Main St, 518-828-5751, franklinmicare@rocketmail.com
- >Little Falls, NEW YORK, 13365; Saving Time, PO BOX 169, savingtime@clockandwatchsite.com, (315) 823-1205, www.clockandwatchsite.com
- >New Hope, PENNSYLVANIA, 18938, 6340 Lower York Rd, (215) 862-2415, www.nationalclockrepair.com
- >Douglassville, PENNSYLVANIA, 1860 Weavertown Rd, 19518, Merritt's Anitques, (610) 689-9541, info@merritts.com, www.merritts.com
- >Peace Dale, RHODE ISLAND, Old School Antiques, Peter Nunes, 4 Hopkins Ln, (410) 742-2112, peter.nunes@verizon.net
- >Manassas, VIRGINIA, 20110; Orsini & Frost, 9071 Center Street, 703-368-0618

**Dial Restoration & Repainting**

- > The Clocksmith, 1531 Bower Ln, Johns Island, SC 29455, (843) 327-0455, bryan@clockrepaircharlestonsc.com, www.clockdialrestorations.com
- >The Dial House, 3971 Buchanan Hwy, Dallas, GA 30157, (770) 445-2877, dial\_house@juno.com, www.dialhouse.net

**Related Restoration Materials/Vendors**

- >Merritts, Inc., Box 277, Douglasville, PA, 19518, 1-800-345-4101 – www.merritts.com
- >Timesavers, Box 12700, Scottsdale, AZ, 85267, 1-800-552-1520 – www.timesavers.com

**Hand Painted Tablets**

- >Lee Davis, 4150 Old Orchard Rd., York, PA 17402, 717-757-7267
- >Tom Moberg, 2323 Vandekaar Rd, Owasso, MI 48867 989-723-3112

All listings are made free of charge. We apologize for any error or omission. Please let us know of address changes or poor service from those recommended.



Fax: (603) 432-2271  
 Phone: (603) 432-2237  
 E-mail: bids@schmitt-horan.com

--This form must be submitted 48 hours prior to the start of the auction--

PLEASE BID ON MY BEHALF, BIDDING AS CHEAPLY AS POSSIBLE, ON THE LOTS LISTED AND DESCRIBED BELOW. THE \$ FIGURE ENTERED IN THE RIGHT COLUMN IS MY MAXIMUM "HAMMER" PRICE, AND I UNDERSTAND THERE IS A 20% BUYER'S PREMIUM ADDED TO THAT AMOUNT. THERE IS NO SALES TAX IN NH.

Please note: We offer "+1 BIDDING SERVICE". See our website for details.

LOT #	BRIEF DESCRIPTION	\$ BID / +1 (Y/N)
		\$ _____ 1
		\$ _____ 2
		\$ _____ 3
		\$ _____ 4
		\$ _____ 5
		\$ _____ 6
		\$ _____ 7
		\$ _____ 8
		\$ _____ 9
		\$ _____ 10
		\$ _____ 11
		\$ _____ 12
		\$ _____ 13
		\$ _____ 14
		\$ _____ 15
		\$ _____ 16

Additional sheets are acceptable. Upon notification that my bid or bids are successful, I shall promptly remit the balance due. I understand that I will be billed separately by the packing company for shipping.

\_\_\_\_\_/\_\_\_\_\_/\_\_\_\_ Total number of bids \_\_\_\_\_ )  
 Signature \_\_\_\_\_ Date \_\_\_\_\_

Name \_\_\_\_\_

Address \_\_\_\_\_ City \_\_\_\_\_

State \_\_\_\_\_ Zip \_\_\_\_\_ E-mail \_\_\_\_\_

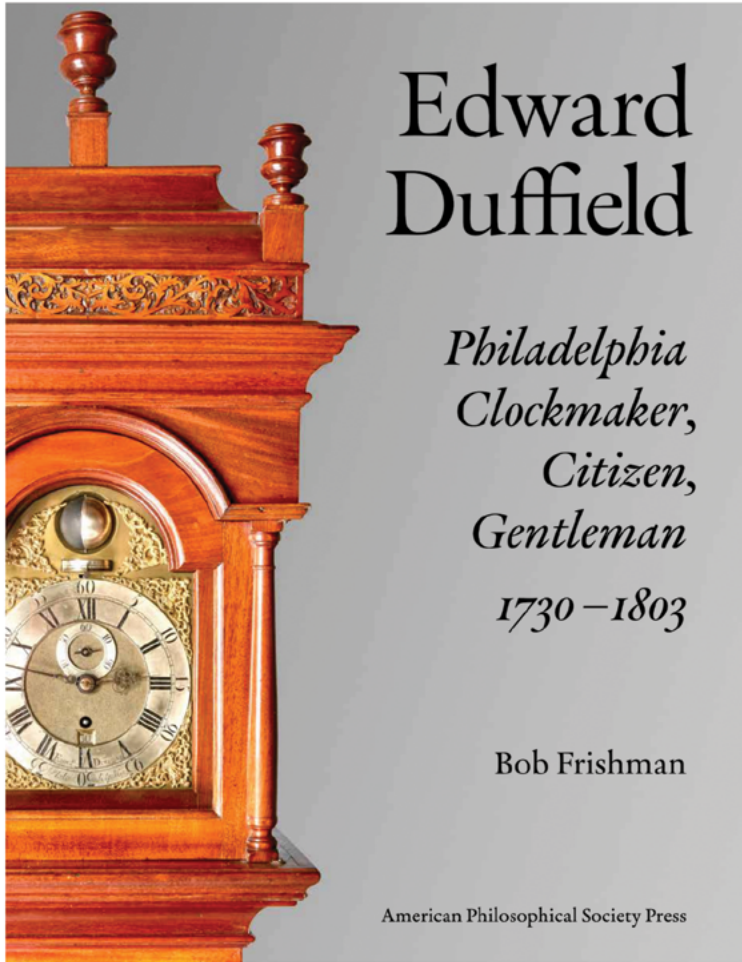
Telephone: Evening \_\_\_\_\_ Day \_\_\_\_\_ Cell \_\_\_\_\_

All invoices will be mailed or e-mailed two to three days after the auction. Please do not contact us regarding an invoice until at least 72 hours after the auction.

We offer this service as a convenience to our customers, and we cannot be responsible for late mail, failed transmissions, or other failures to execute bids. We are also not responsible for an unreadable FAX written in blue ink. Please use black ink, print clearly and confirm successful transmission by phoning us. All bids are confidential. We urge you to FAX this form as regular mail can prove unreliable. Express or Priority mail are also satisfactory. NH Lic #5060. You may also submit this form by email or phone. For other questions or bids e-mail: bids@schmitt-horan.com or telephone the number listed above.

COPIES OF THIS FORM ARE ACCEPTABLE





# NEW BOOK BY BOB FRISHMAN

256 PAGES  
227 ILLUSTRATIONS  
HARDCOVER W/DUST JACKET

71 DOCUMENTED DUFFIELD  
CLOCKS AND INSTRUMENTS

**JUST \$60**  
ORDER ON AMAZON

**SIGNED COPY FROM  
AUTHOR**

**\$75 POSTPAID**  
[WWW.EDWARDDUFFIELD.COM](http://WWW.EDWARDDUFFIELD.COM)

"Far more than a treatise on pre-industrial horological timekeeping, this book tells the compelling stories of a man, a city, and an era, while deepening our appreciation for Duffield's stately sentinels — often a colonial American family's most valuable possession — and the times and places in which their makers lived." *University of Pennsylvania Press*

"With over forty years as a horologist and some 140 published articles, Bob Frishman is abundantly qualified to relate Duffield's story." — *Antiquarian Horology*

"[It's] refreshing that the author fully integrated the life of Edward Duffield into the historical events of the time...if you enjoy reading about American history or colonial clockmaking, this book should be in your library." — *Watch & Clock Bulletin*

"In *Edward Duffield*, Frishman offers us a truly definitive work, not just on an individual clockmaker, but on the world in which that man lived. It draws connections across many aspects of the horological, political, commercial, social and religious life of the earliest years of the nation, and is highly recommended reading for anyone who is interested in horological or American history — or both!" — *Horological Times*

"With its first-rate photography and long and useful bibliography, it should be on every library shelf." — *Maine Antique Digest*